



Construction Products Group



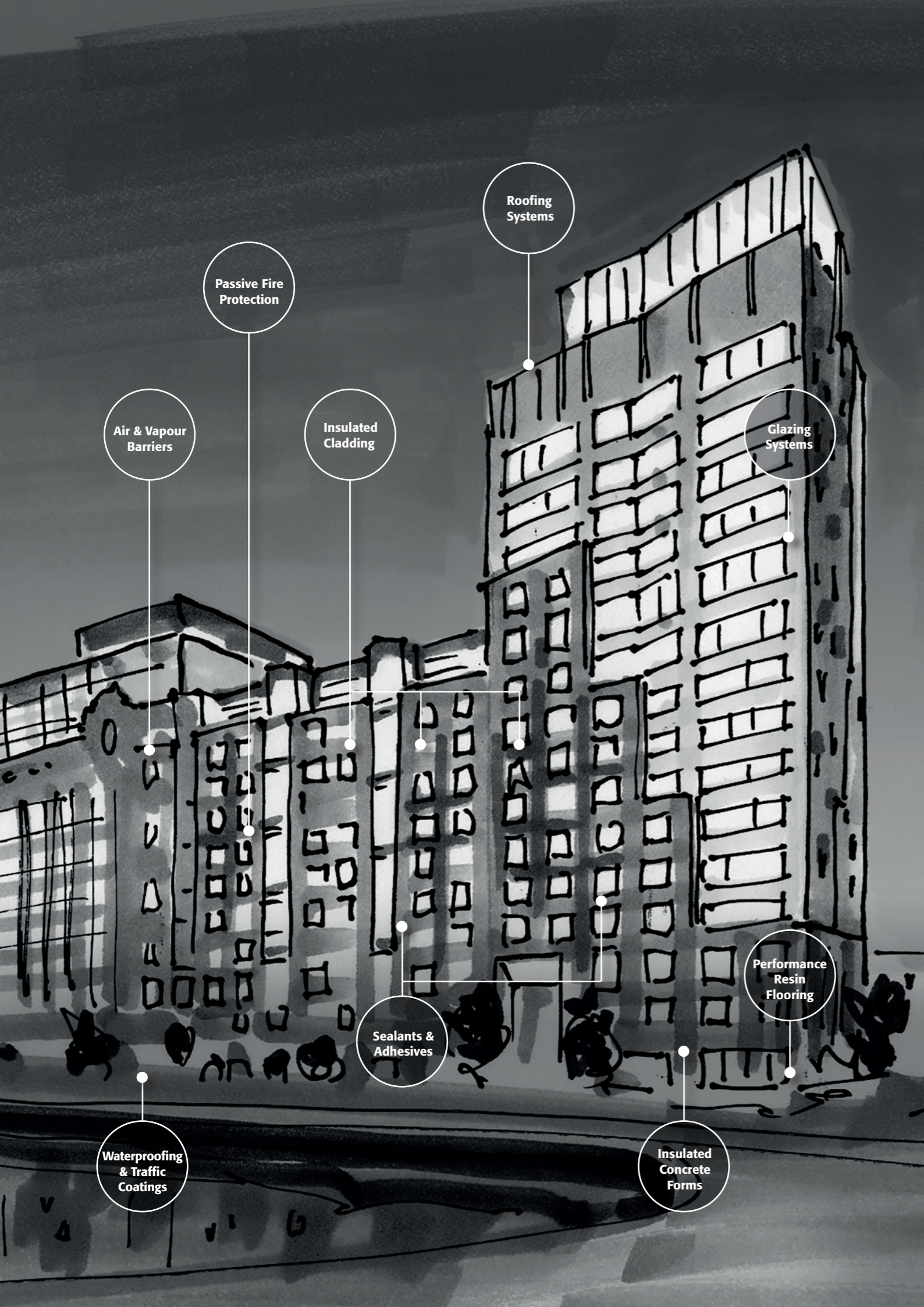


A powerful union of industry leading brands

When we say Tremco Construction Products Group (CPG) brands provide envelope solutions for all six sides of the building, that means comprehensive product systems that make it faster to build or restore and simpler to maintain, and that extend the building's usable life.

Together, solutions from Tremco CPG empower your team to bring their vision to life, whether it's new construction, renovations or restoration – to improve weathertightness and energy efficiency, give a brand new look to an aging structure, or complete a historical preservation.





INTRODUCING TREMCO CONSTRUCTION PRODUCTS GROUP

A world leading supplier of building envelope solutions across the Asia Pacific region

We know that the success of a construction project relies on more than the products that are used, as it takes a lot of skill, knowledge, understanding, and expertise to ensure that those products are applied in the best way possible.

At Tremco Construction Products Group (CPG), we're committed to shaping the future through innovative approaches and sustainable solutions.

This commitment is backed up by the fact that we bring together first-class technology with a customer-focused approach, along with skills that have been built up over multiple decades within very specialised fields across Asia Pacific, to provide a truly unique service.

From joint sealing, façade bonding and insulation through to passive fire protection, performance resin flooring, waterproofing, and roofing solutions – our broad range makes us the ideal partner to solve the complex challenges faced by today's architects, contractors, developers, and trades.

With expertise in a range of product technologies, Tremco CPG provides solutions to help you engineer structures that are more efficient to build and maintain, are virtually impervious to the elements, and can provide a multitude of finishes.

Our brands include Tremco, Dryvit, NewBrick, Nudura, Willseal, Flowcrete, illbruck, Nullifire, Vandex, and Euclid Chemical.

Why Tremco CPG?



Faster Construction Time

Lightweight, fast-curing and prefabricated products mean less occupant disruption, faster return to service, less revenue lost, and no call-backs.



Stronger and More Resilient

Our systems are designed for maximum durability, many with service lives far surpassing that of competing systems.



Cost Effective

A broad range of options that fit any budget – but also help you keep an eye on the future to ensure cost-effective ownership, operation and maintenance.



One Point of Contact

Products are tested for compatibility and backed by system warranties – all through a single point of contact, with a single point of responsibility.



Any Look You Want

A wide range of colours and finishes for floors, walls, façades and roofs to provide almost unlimited design potential for your building project.



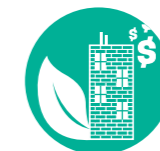
Impervious to Weather

Products designed for maximum protection from the elements, including above and below ground-level solutions to prevent the ingress of water.



Better Insulated

Industry leading brands that provide solutions for more efficient building construction and operation, and exceeding strict energy codes for insulation.



Leading Edge Sustainability

Construction solutions that meet green building standards, enhancing building efficiency and conscious of the environment that surrounds us.

>> For more information, visit www.tremcocpg-asiapacific.com

The power of one: uniting leading construction brands under one roof

The product brands housed within Tremco CPG APAC cover a wide array of different construction needs and provide a wealth of complex services, support and systems that are rarely found together under one roof.

The wide-spread trust in the quality of our brands and their technologies can be seen by the number of high-profile, challenging and world-leading developments that have chosen to utilise our products, services and expertise.



A portfolio of high performance, integrated building solutions which includes innovative above and below grade waterproofing systems, sealants, glazing and gaskets, and roofing materials.



Insulated cladding options can look like anything—stone, masonry, metal, or brick. They are lighter, faster and easier to install, more cost-effective to build with and operate and virtually impervious to weather.



The biggest innovation in brick façade technology, offering the aesthetic you want without all of the weight, time, workmanship and cost associated with old, heavy traditional clay brick.



Insulated Concrete Forms (ICF) foundations and wall systems are much stronger, better insulated and can be installed in much lower temperatures than traditional framing found in construction.



Specialising in innovative, pre-compressed, fire rated joint sealants that provide solutions for expansion and movement joints in almost every vertical and horizontal application.



High-quality epoxy and polyurethane resin flooring, cementitious floor screeds, and protective car park coating solutions, providing durable and hard wearing surfaces for all types of environments.



Sealing and bonding solutions for windows and façades - offering the right set of products, services and expertise to lessen your workload and improve the overall climate of buildings.



Passive fire protection is highly complex but a crucially important element of construction. We provide systems that perform when they are called upon, giving building owners peace of mind.



The original crystalline waterproofing technology that works by reducing the permeation of water through concrete structures, using the formation of crystals to block the concrete's capillary pores.



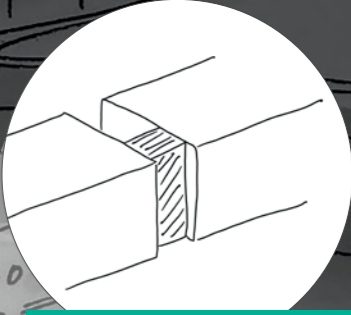
EUCLID CHEMICAL

Specialty chemical products for strengthening, repairing and enhancing concrete and masonry. For over a century, Euclid Chemical has built a reputation on quality products and innovative solutions.

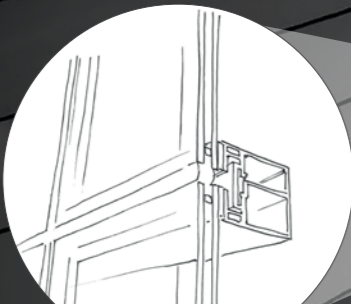
We have you covered,
from roof to basement,
through a single point
of contact...



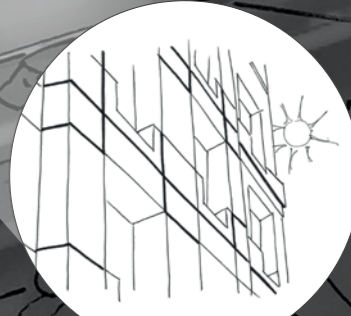
Nullifire's passive fire protection systems are designed to provide solutions that safeguard buildings and their occupants, extending the structural integrity of a structure when disaster occurs.



Willseal foam expansion joints streamline installation, offer unsurpassed movement capabilities and help create safer, greener, weather-tight structures.



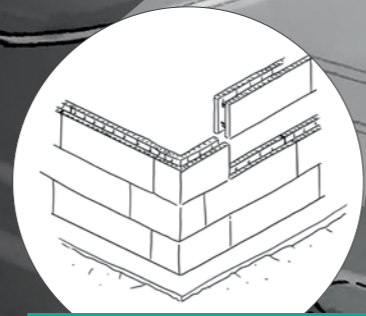
Tremco and illbruck commercial glazing sealants, gaskets and tapes integrate with air barriers and transition assemblies at the window-to-wall interface, creating an air- and water-tight wall proven in extreme weather conditions.



Dryvit insulated cladding options reflect any aesthetic – stone, masonry, metal, terracotta, brick – are lighter, faster and easier to install, and make more durable, energy-efficient structures that are less expensive to build and operate.



Tremco and Vandex's industry-leading above and below-grade waterproofing and revolutionary traffic coating technologies ensure watertight, durable foundations and decks.



Nudura Insulated Concrete Forms (ICF) for foundations and wall systems are stronger, better insulated and can be installed in much lower temperatures than traditional framing.



Flowcrete's range of performance resin flooring solutions provide protection in demanding environments, while offering extensive design benefits that can enhance the aesthetic of almost any commercial or industrial development.



NewBrick – an innovative, lightweight insulated brick veneer – provides a comprehensive, high-performance, whole-wall alternative to traditional brick.

UNDERSTANDING YOUR PROJECT

Protecting your reputation is how we've built ours over numerous years in the industry

Tremco CPG understands that your business is constantly facing project schedule demand, margin pressures, ever changing building trends and complex designs.

We help you meet these challenges by providing superior technology along with a personalised service that helps you deliver and reduce call backs.

This full-spectrum support means that you are provided with assistance right from the start

of the design and specification phase through the application work and into the after-care maintenance and ongoing daily operations of the site.

When working with **Tremco Construction Products Group** on your next building or maintenance project, you're getting much more than high performance building materials, you'll also be getting a well-rounded customer experience that includes...



Technical Advice for Every Situation

Whether on the construction site, over the phone or via chat, our specialists are always ready to provide you with advice and support. We also provide application videos that explain procedures and processing steps for our products in detail.



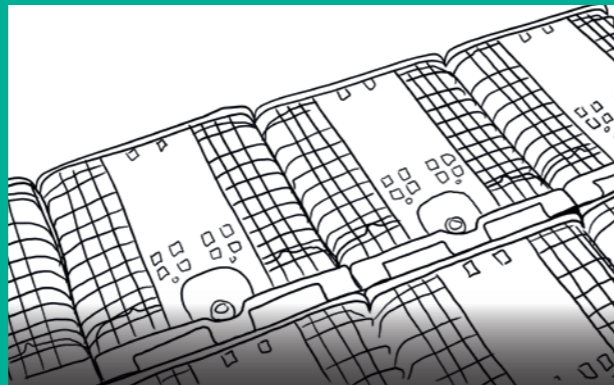
Local Manufacture and Supply

We manufacture much of our product portfolio in a number of plants located across Asia Pacific. This means that we can react to market requirements and local building preferences, backed up by a truly global R&D network.



Training Courses and Seminars

Our training courses provide technicians and site managers alike with support during planning and execution. Our educational seminars keep planners and architects up-to-date on the latest trends in construction.



Shaping a Sustainable Future

We strive to reduce our environmental footprint across all of our plants through recycling, packaging optimisation and proper waste disposal, ensuring that our customers can source materials that meet the highest standards of environmental best practise.

Find out where we operate at
www.tremcocpg-asiapacific.com



Construction Products Group

 Flowcrete
for the world of your feet

 Millbruck

 Nullifire

 Vandex



Tremco Construction Products Group (CPG) represents the combined power of brands including Dryvit, NewBrick, Nudura, Willseal, and Tremco, along with Tremco CPG affiliates Flowcrete, illbruck, Nullifire, Vandex and Euclid Chemical.

Our products and services empower teams to develop, design, restore and engineer structures that are more efficient to build and maintain, are virtually impervious to the elements and can provide any look desired.

www.tremcocpg-asiapacific.com

