



EUCLID CHEMICAL

PRECISION EPOXY GROUTS

E³-FLOWABLE AND E³-DEEP POUR



TYPICAL APPLICATIONS

- Grouting foundations, bases and columns
- Setting anchors
- Grouting crane rails
- Supporting chemical tanks and processing equipment
- Filling post-tensioned pour-backs
- Concrete repair

FEATURES AND BENEFITS

- Low exotherm
- Expansive/non-shrink
- Low creep maintains alignment of machinery
- Excellent baseplate contact and load transfer
- Good bond to steel and concrete for optimum load transfer and vibration dampening
- Chemical resistance enables use in challenging environments
- Equipment and tools can be cleaned with soap and water

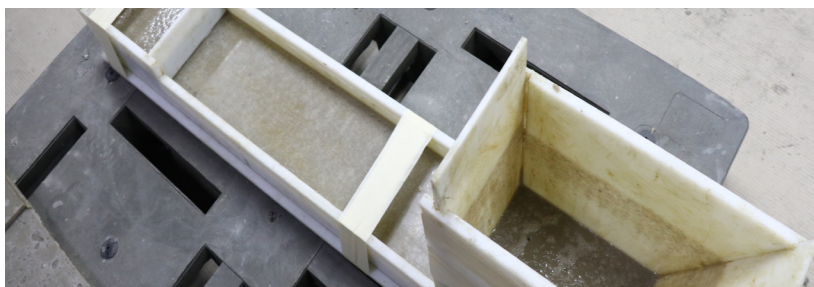
Euclid Chemical's **E³-FLOWABLE** and **E³-DEEP POUR** are used to support machinery, anchors, and rails, and excels in many other applications where proper equipment alignment and transmission of load is critical. E³ grouts are also used to fill "pour-back" anchorages on post tensioning projects and can be used for concrete repair. With superior engineering properties and resistance to chemical attack, Euclid Chemical's epoxy grouts are formulated for easy installation, with good flow characteristics suitable for pouring or pumping, and convenient soap and water cleanup.

E³-FLOWABLE

E³-Flowable is a high flow, high strength, precision epoxy grout designed for large plates and narrow configurations where flowability is critical. With balanced physical properties and excellent resistance to vibration and torque, E³-Flowable is formulated for easy installation, is suitable for pouring or pumping, and can be mixed with a variable amount of aggregate to achieve the exact flow required.

E³-DEEP POUR

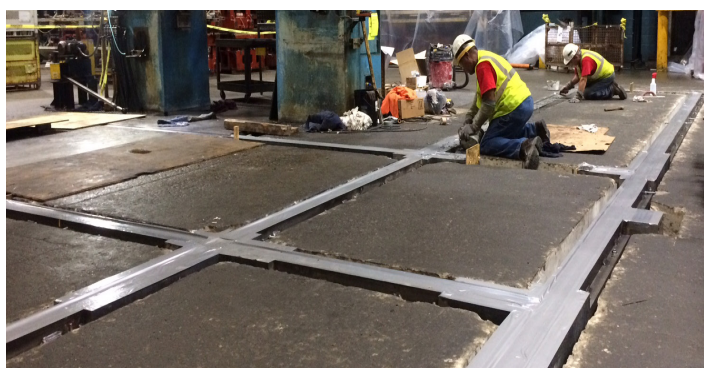
E³-Deep Pour is formulated for deep placements up to 450mm in depth per lift. The aggregate in E³-Deep Pour can be added in two different proportions to achieve either a standard flow or high flow consistency.



**EUCLID CHEMICAL****E³ EPOXY GROUTS TYPICAL ENGINEERING PROPERTIES OF STANDARD FLOW MIXES**

| PROPERTY | E³-FLOWABLE | E³-DEEP POUR |
|--|-------------------------------|--------------------------------|
| Compressive Strength | 87 MPa | 98 MPa |
| Flexural Strength | 30 MPa | 27 MPa |
| Tensile Strength | 13 MPa | 14 MPa |
| Bond Strength | 24 MPa | 25 MPa |
| Coefficient of Thermal Expansion | 16 x 10 ⁻⁶ | 2.8 x 10 ⁻⁶ |
| Effective Bearing Area | > 95% | > 95% |
| Working Time | 95 minutes | 60 minutes |
| Peak Exotherm | 29° C | 35° C |
| Minimum/Maximum Placement Thickness per Lift | 13mm minimum 150mm maximum | 25mm minimum 450mm maximum |

For additional technical information, refer to the E³-Flowable and E³-Deep Pour data sheets



For more than 100 years, The Euclid Chemical Company has served as a leading supplier to the concrete and masonry industry, offering a full line of engineered concrete admixture and construction products marketed under the EUCO brand name. These products include concrete admixtures, block and masonry additives, curing and sealing compounds, epoxy adhesives, floor and wall coatings, structural grouts for columns, equipment and machinery, joint fillers and repair products. The Euclid Chemical Company strives to bring innovative technologies and products to the concrete market with industry-leading customer service. Euclid Chemical is a brand of Tremco Construction Products Group, a global manufacturer and service provider of high performance building materials. To find your local office, visit: www.tremcocpg-asiapacific.com