



OUR SOLUTIONS FOR  
**AIRPORTS**

TERMINAL BUILDINGS | AIRCRAFT HANGARS |  
BRIDGES | TUNNELS | RUNWAYS | CAR PARKS

 **TREMCO**  
Construction Products Group

# A world leading supplier of building envelope solutions across Asia Pacific

**We know that the success of a construction project relies on more than the products that are used, as it takes a lot of skill, knowledge, understanding, and expertise to ensure that those products are applied in the best way possible.**

At Tremco Construction Products Group (CPG), we're committed to shaping the future through innovative approaches and sustainable solutions.

This commitment is backed up by the fact that we bring together first-class technology with a customer-focused approach, along with skills that have been built up over multiple decades within very specialised fields across Asia Pacific, to provide a truly unique service.

From joint sealing, façade bonding and insulation through to passive fire protection, performance resin flooring, waterproofing, and roofing solutions — our broad range makes us the ideal partner to solve the complex challenges faced by today's architects, contractors, developers, and trades.

With expertise in a range of product technologies, Tremco CPG provides solutions to help you engineer structures that are more efficient to build and maintain, are virtually impervious to the elements, and can provide a multitude of finishes.

Our brands include Tremco, Dryvit, NewBrick, Nudura, Willseal, Flowcrete, illbruck, Nullifire, Vandex, and Euclid Chemical. Pitchmastic PmB, Nufins, Matacryn, PDS and Prime Resins products are also marketed by Tremco CPG in Asia Pacific.



## Why Tremco CPG?



### Faster Construction Time

Lightweight, fast-curing and prefabricated products mean less occupant disruption, faster return to service, less revenue lost, and no call-backs.



### Stronger and More Resilient

Our systems are designed for maximum durability, many with service lives far surpassing that of competing systems.



### Cost Effective

A broad range of options that fit any budget — but also help you keep an eye on the future to ensure cost-effective ownership, operation and maintenance.



### One Point of Contact

Products are tested for compatibility and backed by system warranties — all through a single point of contact, with a single point of responsibility.



### Any Look You Want

A wide range of colours and finishes for floors, walls, façades and roofs to provide almost unlimited design potential for your building project.



### Impervious to Weather

Products designed for maximum protection from the elements, including above and below ground-level solutions to prevent the ingress of water.



### Better Insulated

Industry leading brands that provide solutions for more efficient building construction and operation, and exceeding strict energy codes for insulation.



### Leading Edge Sustainability

Construction solutions that meet green building standards, enhancing building efficiency and conscious of the environment that surrounds us.

 **TREMCO**  **Dryvit**  **Nudura**  **Willseal**

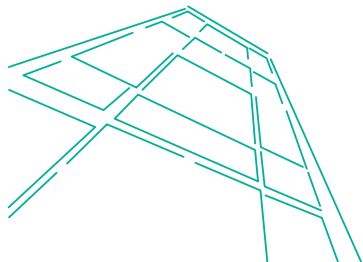
 **Flowcrete**  
for the world of your feet

 **illbruck**  **Nullifire**  **Vandex**



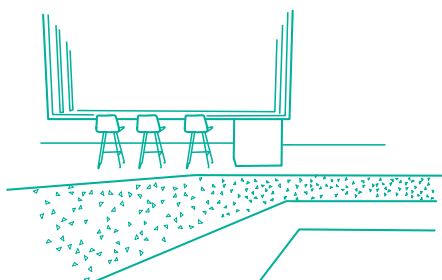
# A FULL RANGE OF SOLUTIONS

We are uniquely positioned to provide single-source products, services and solutions.



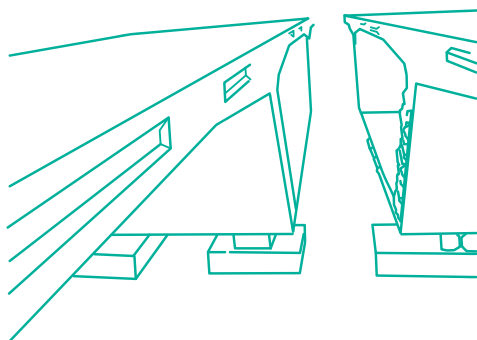
## SEALANTS, GLAZING & FAÇADES

No single glazing system can solve every application. For this reason, Tremco is the only single source supplier offering a comprehensive line of glazing sealants, tapes, spacers and more.



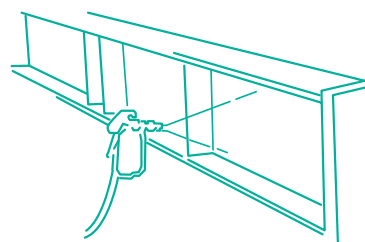
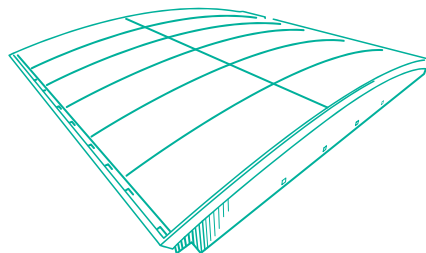
## RESINOUS FLOORING

We have been supplying world-class seamless flooring solutions; from innovative industrial and commercial resin flooring through to cementitious floor screeds and car park traffic coating systems.



## WATERPROOFING

A comprehensive range of waterproofing solutions, from basement to roof, all designed to protect the building structure and internal assets from the damaging effects of water ingress.



## FIRE PROTECTION

We provide a tested and approved solution to your structural steel frame, which provides a thermal insulation barrier and high impact resistance. We also provide a complete firestop system for wall and floor penetrations.

## CONCRETE

Wide range of concrete admixtures including cutting-edge PCE technology, macro-synthetic fibres, shrinkage compensating admixtures together with full range of construction products and underground construction technology.

# PRODUCT SELECTION GUIDE\*

	AIRPORT AREAS									
	Concrete Slab	Bridges & Tunnels	Car Parking Structures	Runways, Apron, Taxiways	Aircraft Hangar	Plant Rooms	Logistics Hubs & Warehouses	Fire Station	Terminal Building	Baggage Handling Areas
<b>Grouts &amp; Repair Mortars</b>										
<b>NS Grout</b> (High Strength Grout)		●	●		●	●	●	●	●	●
<b>E3 Flowable</b> (High Strength Grout)		●	●			●				●
<b>Versaspeed 100</b> (High Strength Repair Mortar)		●	●	●	●					
<b>Eucocrete 5000</b> (High Strength Repair Mortar)	●	●	●	●	●	●	●	●	●	●
<b>Eucopatch 20</b> (High Strength Repair Mortar)	●	●	●			●	●	●	●	●
<b>Eucopatch P</b> (High Strength Repair Mortar)	●	●	●			●	●	●	●	●
<b>Concrete Admixtures</b>										
<b>Tuf-Strand SF</b> (Macro-Synthetic Fibre)	●	●	●	●	●		●	●		
<b>Conex</b> (Shrinkage Compensating Admixture)	●	●	●	●	●	●	●	●	●	●
<b>Vandex AM10</b> (Crystalline Waterproofing Admixture)	●	●	●		●	●	●	●	●	●
<b>Liquid Densifiers &amp; Curing Compounds</b>										
<b>Euco Diamond Hard</b> (Liquid Densifiers)	●		●		●	●	●	●		●
<b>Ultraguard</b> (Liquid Densifiers)	●				●	●	●	●		●
<b>Aqua-Cure VOX</b> (Curing Compounds)	●	●	●	●	●	●	●	●	●	●
<b>Eucocure VOX</b> (Curing Compounds)	●		●		●	●	●	●	●	●
<b>Waterproofing &amp; Roofing</b>										
<b>TREMProof Amphibia/FBM</b> (Pre-Formed Waterproofing)	●		●		●	●	●	●	●	●
<b>Paraseal GM/LG</b> (Pre-Formed Waterproofing)			●		●	●	●			●
<b>Alphaguard BIO</b> (Liquid Applied Roofing System)					●		●	●	●	
<b>Pitchmastic PmB</b> (Spray Applied PU Waterproofing)		●								
<b>Matacryn WPM/WS</b> (PUMA Bridge Deck Waterproofing System)		●	●							
<b>Vandex AM10</b> (Crystalline Waterproofing Admixture)	●	●	●		●	●	●	●	●	●
<b>Vandex Super</b> (Crystalline Waterproofing)	●		●		●		●	●	●	●
<b>Surface Water Management</b>										
<b>PDS Systems</b> (Innovative Drainage Solutions)	●	●		●	●		●	●		

\*This guide is used as a general reference. Please consult your local Tremco CPG representative for regional recommendations based on your local building practices and warranty requirements.

	AIRPORT AREAS									
	Concrete Slab	Bridges & Tunnels	Car Parking Structures	Runways, Apron, Taxiways	Aircraft Hangar	Plant Rooms	Logistics Hubs & Warehouses	Fire Station	Terminal Building	Baggage Handling Areas
Screeding & Resinous Flooring										
<b>Isocrete K-Screed</b> (Cementitious Screed)	●		●			●		●	●	●
<b>Mondéco</b> (Epoxy Terrazzo Systems)									●	
<b>Flowflake Kristalina</b> (Decorative Epoxy Coatings)									●	
<b>Flowfresh MF</b> (Cementitious PU Screeds)						●	●	●		●
<b>Flowshield SL</b> (Epoxy Self-Levelling Coating)						●	●	●		●
<b>Flowcoat SF41</b> (High-Build Epoxy Coating)						●	●	●		●
<b>Flowshield SK</b> (Jet Fuel Resistant Epoxy Coatings)					●					
<b>Flowcoat SK</b> (Jet Fuel Resistant Epoxy Coatings)					●					
<b>Flowshield CR</b> (Chemical Resistant Epoxy Coatings)					●	●	●			
Traffic Deck Coatings										
<b>Deckshield LBD</b> (Trafficable PU Moisture Barrier)			●							
<b>Deckshield ID</b> (PU Traffic Coating)			●							
<b>Deckshield ED Rapide</b> (MMA Traffic Coatings)			●							
<b>Vulkem 350/950NF/951NF</b> (Waterproof, PU Trafficable Coatings)			●							
Glazing & Façades										
<b>SG300</b> (Silicone Sealant)								●	●	●
<b>SG555</b> (Silicone Sealant)								●	●	●
<b>SG556</b> (Silicone Sealant)								●	●	●
<b>SG558</b> (Silicone Sealant)								●	●	●
<b>Dryvit Systems</b> (EIFS Systems)								●	●	●
Joint Fillers & Sealants										
<b>Spectrem 900SL</b> (Jet Fuel Resistant Silicone Sealant - Self Levelling)	●	●		●	●					
<b>Spectrem 800</b> (Jet Fuel Resistant Silicone Sealant - Non-Sag)	●	●		●	●					
<b>Vulkem 45SSL</b> (Jet Fuel Resistant PU Sealant)			●	●	●			●		
<b>Vulkem 202</b> (Pitch-free Jet Fuel Resistant Sealant)	●		●	●	●			●		
Fire Protection										
<b>Nullifire SC902</b> (Intumescent Coating)			●		●	●	●	●	●	●
<b>Nullifire Range</b> (Fire Stopping Solutions)			●			●	●	●	●	●
Landscaping Areas										
<b>Increte</b> (Decorative Concrete Systems)									●	

\*This guide is used as a general reference. Please consult your local Tremco CPG representative for regional recommendations based on your local building practices and warranty requirements.



# SOLUTIONS AND PRODUCTS FOR AIRPORTS

Airport infrastructure presents many challenges. Tremco CPG understands these challenges and offers a wide range of high performance solutions for different areas of the airport.



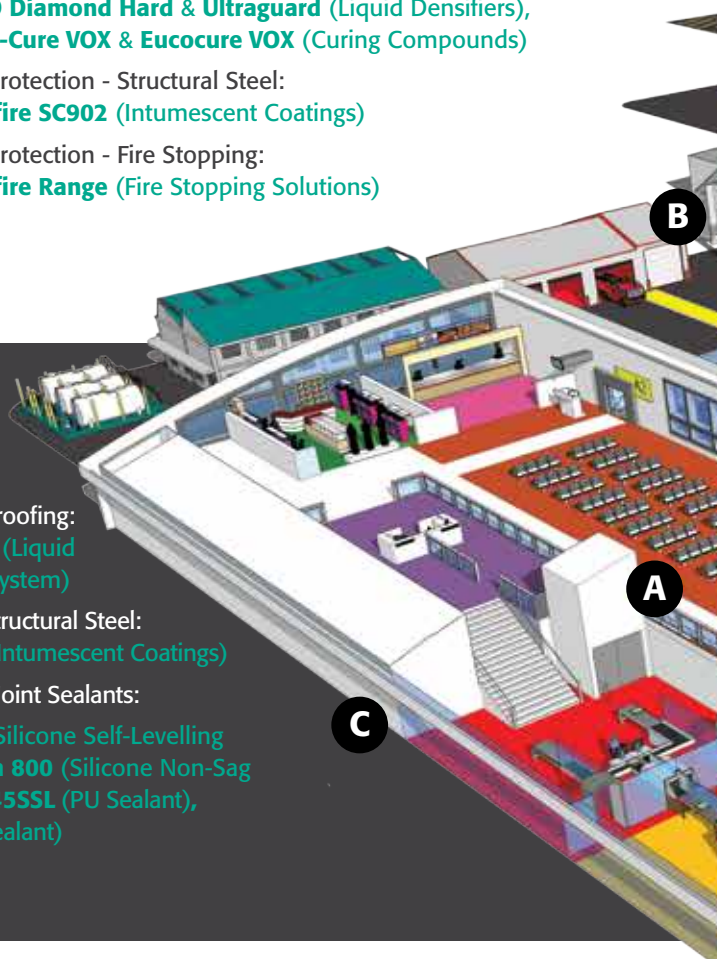
## A. TERMINAL BUILDING

- Resinous Floor Finishes -  
Concourse Areas, Baggage Claim, Retail:  
**Mondéco** (Epoxy Terrazzo Systems),  
**Flowflake** (Decorative Epoxy Coatings)
- Resinous Floor Finishes -  
Back-of-House, Baggage Handling:  
**Flowfresh MF** (Cementitious PU Screeds),  
**Flowshield SL** (Epoxy Self-Levelling Coating),  
**Flowcoat SF41** (High-Build Epoxy Coating)
- Sub-Floor:  
**Isocrete K Screed** (Cementitious Screed)
- Façades:  
**Dryvit** (EIFS Systems)
- Below Grade Waterproofing:  
**TREMproof Amphibia** (Pre-Formed Waterproofing),  
**Vandex AM10** (Crystalline Waterproofing Admixture)
- Roofing & Waterproofing:  
**AlphaGuard BIO** (Liquid Applied Roofing System)

- Glazing Sealants & Weather Seals:  
**SG300, SG555, SG556, SG558** (Silicone Sealants)
- General Concrete:  
**Conex** (Shrinkage Compensating Admixtures),  
**EUCO Diamond Hard & Ultraguard** (Liquid Densifiers),  
**Aqua-Cure VOX & Eucocure VOX** (Curing Compounds)
- Slab-on-Grade/Topping on Hollow Core Slab/Metal  
Decking Slab:  
**Tuf-Strand SF** (Macro-Synthetic Fibre),  
**Conex** (Shrinkage Compensating Admixtures),  
**EUCO Diamond Hard & Ultraguard** (Liquid Densifiers),  
**Aqua-Cure VOX & Eucocure VOX** (Curing Compounds)
- Fire Protection - Structural Steel:  
**Nullifire SC902** (Intumescent Coatings)
- Fire Protection - Fire Stopping:  
**Nullifire Range** (Fire Stopping Solutions)

## B. AIRCRAFT HANGARS, FIRE STATIONS & WAREHOUSING

- Resinous Floor Finishes:  
**Flowshield SK, Flowcoat SK,**  
**Flowshield CR** (Epoxy Coatings)
- Concrete Slab-on-Grade:  
**Tuf-Strand SF** (Macro-Synthetic Fibre),  
**Conex** (Shrinkage Compensating  
Admixtures), **EUCO Diamond Hard &  
Ultraguard** (Liquid Densifiers)
- Below Grade Waterproofing:  
**TREMproof Amphibia,**  
**TREMproof FBM**  
(Pre-Formed Waterproofing)
- Roofing & Waterproofing:  
**AlphaGuard BIO** (Liquid  
Applied Roofing System)
- Fire Protection - Structural Steel:  
**Nullifire SC902** (Intumescent Coatings)
- Jet Fuel Resistant Joint Sealants:  
**Spectrem 900SL** (Silicone Self-Levelling  
Sealant), **Spectrem 800** (Silicone Non-Sag  
Sealant), **Vulkem 45SSL** (PU Sealant),  
**Vulkem 202** (PU Sealant)



## C. CAR PARKING STRUCTURES

- Traffic Coatings - Basement:  
**Deckshield LBD**  
(Trafficable PU Moisture Barrier)
- Traffic Coatings - Intermediate:  
**Deckshield ID** (PU Traffic Coating)

## D. APRONS, TAXIWAYS & RUNWAYS

- Concrete Slab-on-Grade:  
**Tuf-Strand SF** (Macro-Synthetic Fibre),  
**Conex** (Shrinkage Compensating Admixtures),  
**EUCO Diamond Hard & Ultraguard** (Liquid Densifiers),  
**Aqua-Cure VOX & Eucocure VOX** (Curing Compounds)
- Jet Fuel Resistant Joint Sealants:  
**Spectrem 900SL, Spectrem 800 & Vulkem 202**

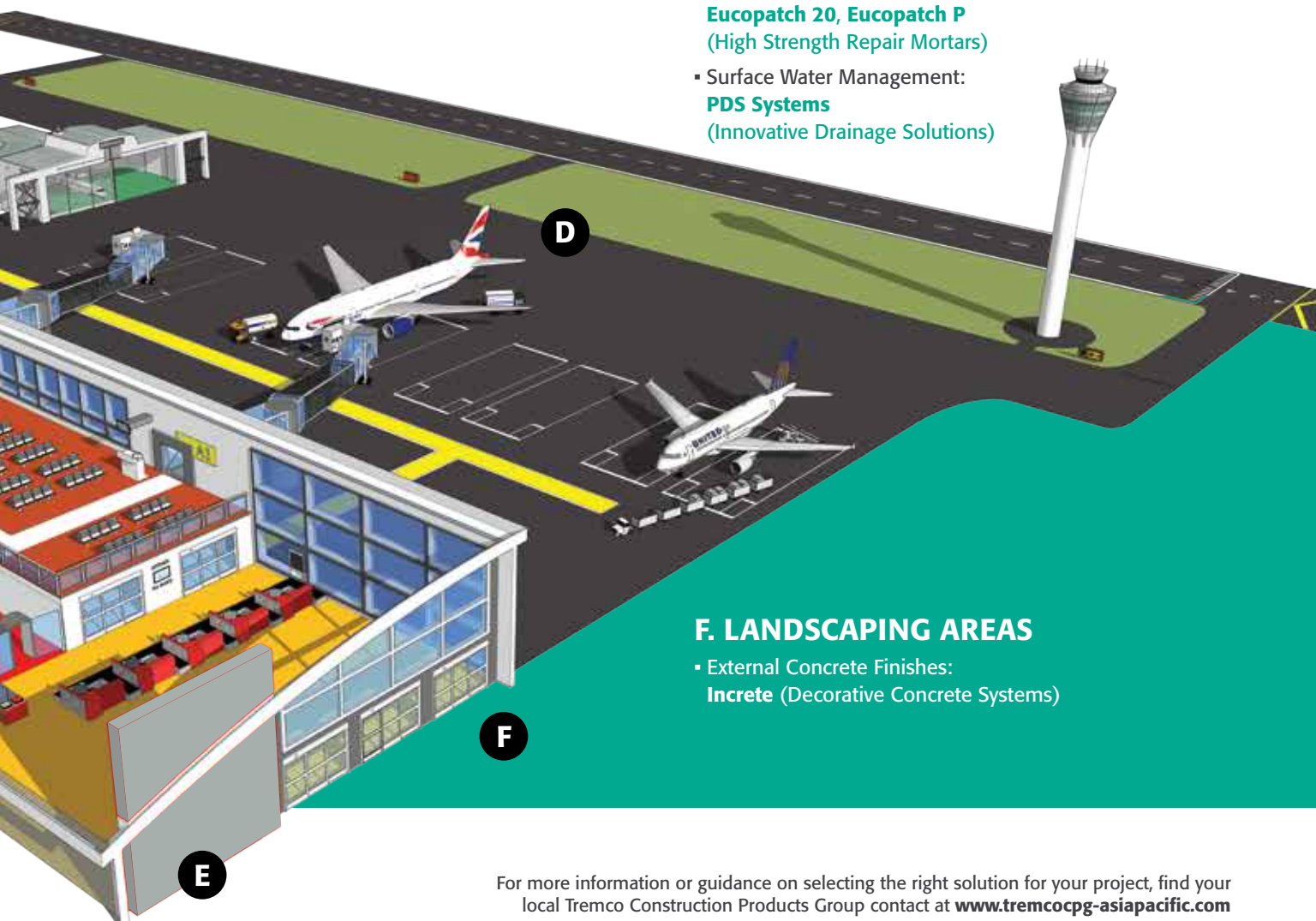
## E. BRIDGES & TUNNELS

- Concrete Admixtures & Fibres:  
**Vandex AM10** (Crystalline Waterproofing Admixture),  
**Tuf-Strand SF** (Macro-Synthetic Fibre),  
**Conex** (Shrinkage Compensating Admixtures)
- Joint Fillers & Sealants:  
**Willseal** solutions (Acrylic-Impregnated Foam Sealants),  
**Britflex BEJ** (Bridge Expansion Joints)
- Bridge Deck Waterproofing Systems:  
**Matacryl WPM/WS** (PUMA), **Pitchmastic PmB** (PU)

- Traffic Coatings - Rooftop & Helipad:  
**Deckshield ED Rapide, Vulkem 350/950NF/951NF**  
(PU & MMA Traffic Coatings)

- Repair Mortars:  
**Versaspeed 100, Eucocrete 5000, Eucopatch 20, Eucopatch P** (High Strength Repair Mortars)
- Runway Lighting Grouts:  
**NS Grout, E3 Flowable** (High Strength Grouts)
- Surface Water Management:  
**PDS Systems** (Innovative Drainage Solutions)

- Positive-Side Waterproofing:  
**TREMproof Amphibia, TREMproof FBM, Paraseal GM/LG**, (Pre-Formed Waterproofing),  
**Pitchmastic PmB** (PU), **Matacryl WPM** (PUMA),  
**Vandex AM10** (Crystalline Waterproofing Admixture)
- Negative-Side Waterproofing:  
**Vandex Super** (Crystalline Waterproofing),
- Repair Mortars:  
**Versaspeed 100, Eucocrete 5000, Eucopatch 20, Eucopatch P**  
(High Strength Repair Mortars)
- Surface Water Management:  
**PDS Systems**  
(Innovative Drainage Solutions)



## F. LANDSCAPING AREAS

- External Concrete Finishes:  
**Increte** (Decorative Concrete Systems)





**Tremco Construction Products Group (CPG) represents the combined power of brands including Dryvit, NewBrick, Nudura, Willseal, and Tremco, along with Tremco CPG affiliates Flowcrete, illbruck, Nullifire, Vandex and Euclid Chemical.**

Our products and services empower teams to develop, design, restore and engineer structures that are more efficient to build and maintain, are virtually impervious to the elements and can provide any look desired.

**[www.tremcocpg-asiapacific.com](http://www.tremcocpg-asiapacific.com)**

 **TREMCO**  
Construction Products Group