



OUR SOLUTIONS FOR

BRIDGES

BRIDGE DECK WATERPROOFING | EXPANSION JOINTS |
GROUTING PRODUCTS | CONCRETE REPAIR & PROTECTION |
BRIDGE DECK DRAINAGE SYSTEM



A world leading supplier of building envelope solutions across Asia Pacific

We know that the success of a construction project relies on more than the products that are used, as it takes a lot of skill, knowledge, understanding, and expertise to ensure that those products are applied in the best way possible.

At Tremco Construction Products Group (CPG), we're committed to shaping the future through innovative approaches and sustainable solutions.

This commitment is backed up by the fact that we bring together first-class technology with a customer-focused approach, along with skills that have been built up over multiple decades within very specialised fields across Asia Pacific, to provide a truly unique service.

From joint sealing, façade bonding and insulation through to passive fire protection, performance resin flooring, waterproofing, and roofing solutions – our broad range makes us the ideal partner to solve the complex challenges faced by today's architects, contractors, developers, and trades.

With expertise in a range of product technologies, Tremco CPG provides solutions to help you engineer structures that are more efficient to build and maintain, are virtually impervious to the elements, and can provide a multitude of finishes.

Our brands include Tremco, Dryvit, NewBrick, Nudura, Willseal, Flowcrete, illbruck, Nullifire, Vandex, and Euclid Chemical. Pitchmastic PmB, Nufins, Matacryn, PDS, Prime Resins, and USL products are also marketed by Tremco CPG in Asia Pacific.



Why Tremco CPG?



Faster Construction Time

Lightweight, fast-curing and prefabricated products mean less occupant disruption, faster return to service, less revenue lost, and no call-backs.



Stronger and More Resilient

Our systems are designed for maximum durability, many with service lives far surpassing that of competing systems.



Cost Effective

A broad range of options that fit any budget – but also help you keep an eye on the future to ensure cost-effective ownership, operation and maintenance.



One Point of Contact

Products are tested for compatibility and backed by system warranties – all through a single point of contact, with a single point of responsibility.



Any Look You Want

A wide range of colours and finishes for floors, walls, façades and roofs to provide almost unlimited design potential for your building project.



Impervious to Weather

Products designed for maximum protection from the elements, including above and below ground-level solutions to prevent the ingress of water.



Better Insulated

Industry leading brands that provide solutions for more efficient building construction and operation, and exceeding strict energy codes for insulation.



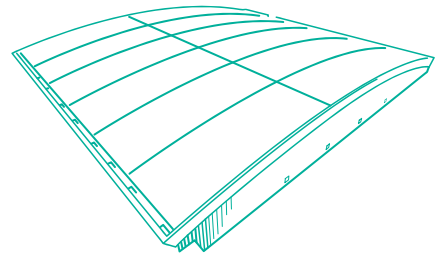
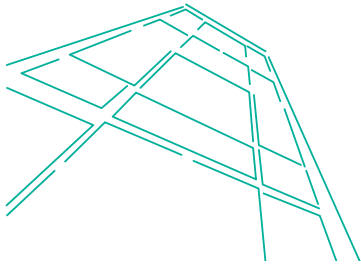
Leading Edge Sustainability

Construction solutions that meet green building standards, enhancing building efficiency and conscious of the environment that surrounds us.



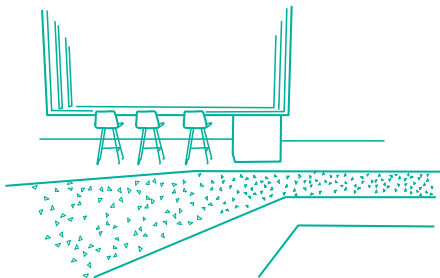
A FULL RANGE OF SOLUTIONS

We are uniquely positioned to provide single-source products, services and solutions.



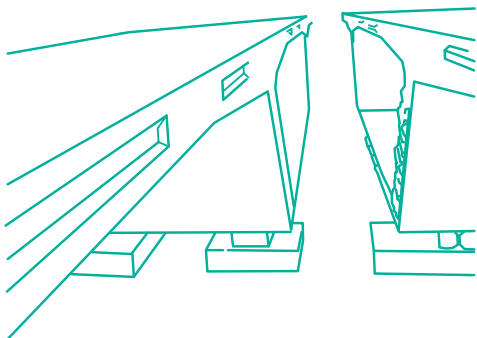
SEALANTS, GLAZING & FAÇADES

No single glazing system can solve every application. For this reason, Tremco is the only single source supplier offering a comprehensive line of glazing sealants, tapes, spacers and more.



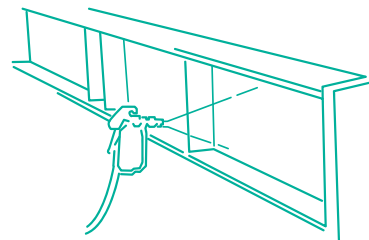
RESINOUS FLOORING

We have been supplying world-class seamless flooring solutions; from innovative industrial and commercial resin flooring through to cementitious floor screeds and car park traffic coating systems.



WATERPROOFING

A comprehensive range of waterproofing solutions designed to protect the building structure and internal assets from the damaging effects of water ingress.



FIRE PROTECTION

We provide a complete firestop system that seals voids, enhances fire protection, provides a thermal insulation barrier and high impact resistance.

CONCRETE

Wide range of concrete admixtures including cutting-edge PCE technology, macro-synthetic fibres, shrinkage compensating admixtures together with full range of construction products and underground construction technology.

PRODUCT SELECTION GUIDE*

	APPLICATION AREAS						
	Bridges & Bridge Decks	Girders	Piers	Abutments	MRT Viaducts	Post Tension Duct Grouting	Precast Elements
Waterproofing							
Pitchmastic PmB (Modified PU WP Coating)	●						
Matacryn WPM/WS (PUMA WP Coating)	●						
Britdex MDP (MMA Based WP Coating)	●						
Expansion Joints							
Britflex BEJ (Bridge Expansion Joints)	●						
FEBA (Bridge Expansion Joints)	●						
Transflex (Bridge Expansion Joints)	●						
Anti-Carbonation & Corrosion Coating (Water Based)							
TREMproof WP (Waterbased Acrylic Anti-Carbonation & Corrosion Coating)	●	●	●	●	●		●
Grouting & Concrete Repair							
NS Grout (Non Shrink Grout)	●	●	●	●	●	●	●
Euco Expan (Shrinkage Compensating Admixture)						●	
Euco Patch 20 (Non Shrink Patch Repair / Grout)	●	●	●	●	●		●
Bonding Agent For Precast Segments							
Dural 100M (Epoxy Bonding Agents)		●					●
Dural 106M (Epoxy Bonding Agents)		●					●
Curing of Concrete							
Aqua-Cure VOX (Water-based Acrylic Polymer Curing & Sealing Compound)	●	●	●	●	●		●
Form Release							
Formshield Pure (Oil Based Concrete Form Release Agent)	●	●	●	●	●		●
Surface Water Drainage System							
PDS Systems (Innovative Drainage Solutions)	●						

*This guide is used as a general reference. Please consult your local Tremco CPG representative for regional recommendations based on your local building practices and warranty requirements.

SOLUTIONS AND PRODUCTS FOR BRIDGES

We have a comprehensive portfolio of building solutions that cover almost all aspects of bridge construction. From flexible bridge deck waterproofing and movement expansion joints, to a wide range of concrete repair, strengthening and protection products.

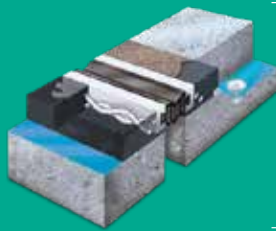


A. EXPANSION JOINTS

- **Britflex BEJ** (Surface mounted mechanical system with elastomeric insert between two metal carrier rails. Set into a rapid curing resin compound known as Britflex® Resin Mortar.)
- **FEBA** (Bituminous Asphaltic Plug Joint)
- **Transflex** (Reinforced steel plates encapsulated in rubber / neoprene; anchored into concrete substrate.)

Application Areas: Bridge Decks and MRT Viaducts

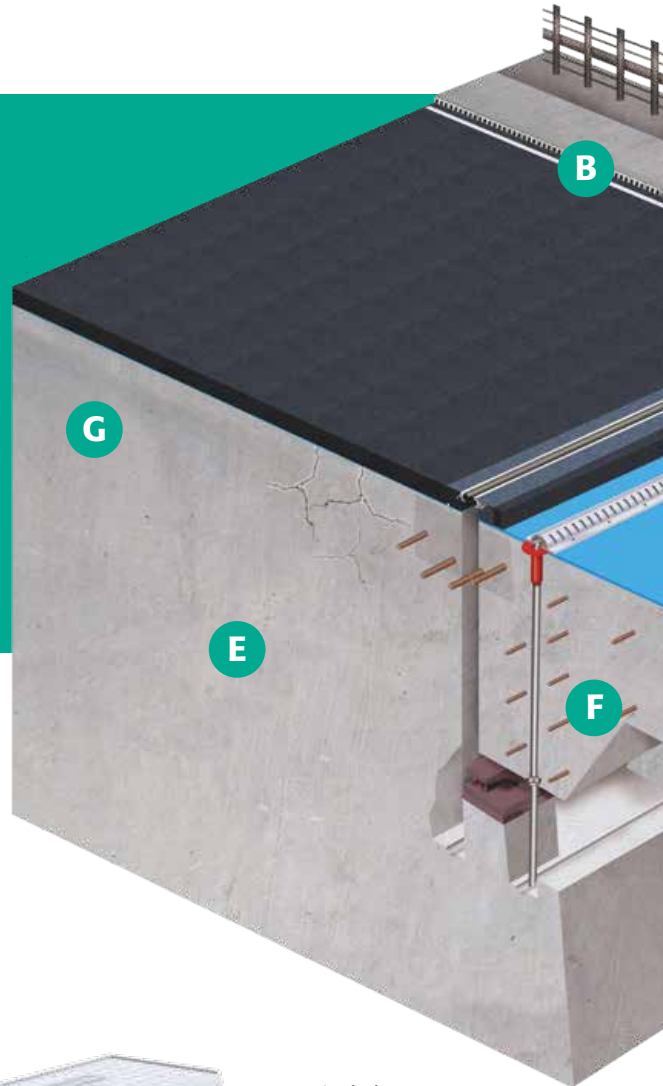
Britflex BEJ



FEBA



Transflex



Envirodeck
Combined
Kerb Drainage

B. SURFACE WATER DRAINAGE SYSTEM

- **PDS Systems** (Innovative Drainage Solutions)

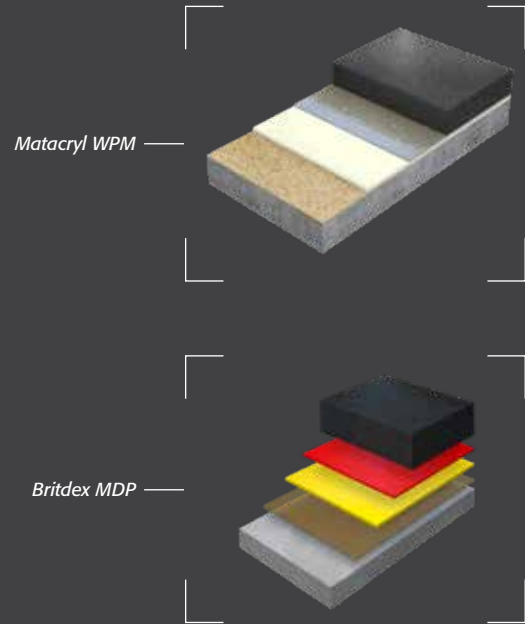
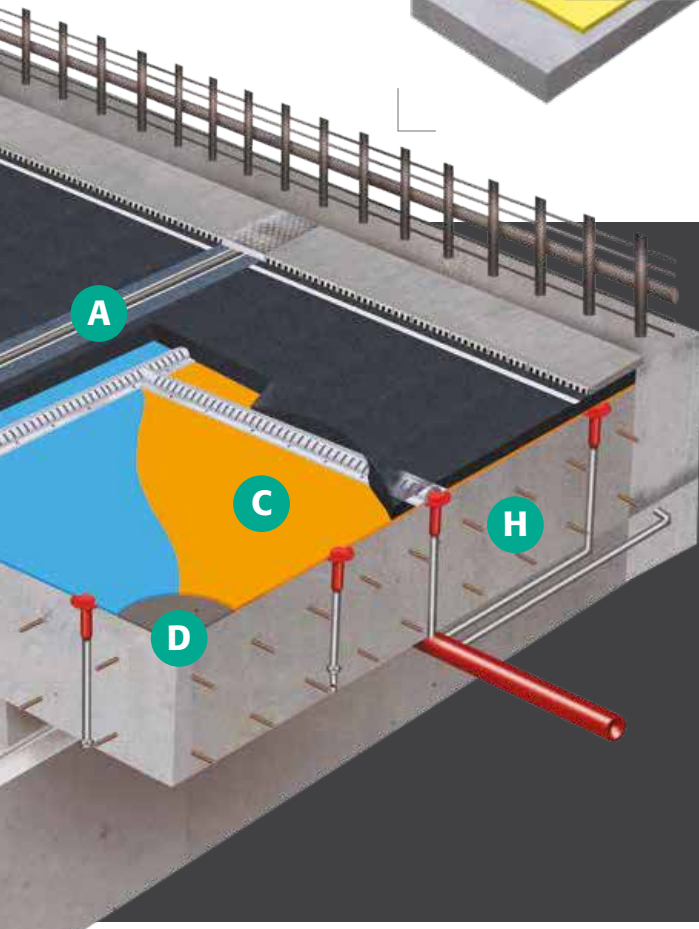
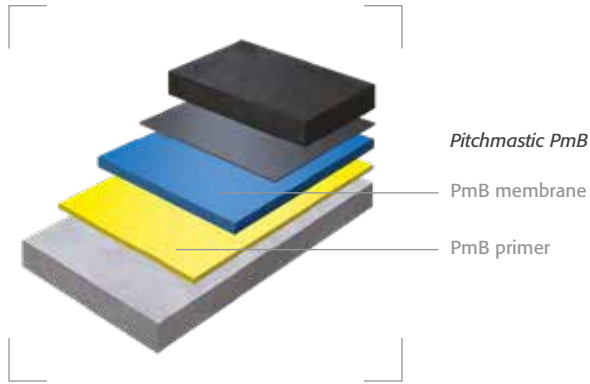
Application Areas: Bridges & Bridge Decks



C. WATERPROOFING

- **Pitchmastic PmB** (Modified PU WP Coating)
- **Matacryn WPM** (PUMA WP Coating)
- **Britdex MDP** (MMA Based WP Coating)

Application Areas: Bridges & Bridge Decks



D. GROUTING & CONCRETE REPAIR

- **NS Grout** (Non Shrink Grout)
- **Euco Expan** (Shrinkage Compensating Admixture)
- **Euco Patch 20** (Non Shrink Patch Repair / Grout)

Application Areas: Post Tension Duct Grouting and General Purpose Repair



For more information or guidance on selecting the right solution for your project, find your local Tremco Construction Products Group contact at www.tremcocpg-asiapacific.com



E. CURING OF CONCRETE

- **Aqua-Cure VOX** (Water-based Acrylic Polymer Curing & Sealing Compound)

Application Areas: Bridges and all Concrete Elements



F. BONDING AGENT FOR PRECAST SEGMENTS

- **Dural 100M** (Epoxy Bonding Agents)
- **Dural 106M** (Epoxy Bonding Agents)

Application Areas: Precast Elements and Bridge Girders



G. ANTI-CARBONATION & CORROSION COATING

- **TREMproof WP** (Waterbased Acrylic Anti-Carbonation & Corrosion Coating)

Application Areas: Bridges, Girders, Piers, Abutments and MRT Viaducts



H. FORM RELEASE

- **Formshield Pure** (Oil Based Concrete Form Release Agent)

Application Areas: Precast and all Concrete Elements





Tremco Construction Products Group (CPG) represents the combined power of brands including Dryvit, Nudura, Willseal, and Tremco, along with Tremco CPG affiliates Flowcrete, illbruck, Nullifire, Vandex, Euclid Chemical, and USL Brands.

Our products and services empower teams to develop, design, restore and engineer structures that are more efficient to build and maintain, are virtually impervious to the elements and can provide any look desired.

www.tremcocpg-asiapacific.com

 **TREMCO**
Construction Products Group