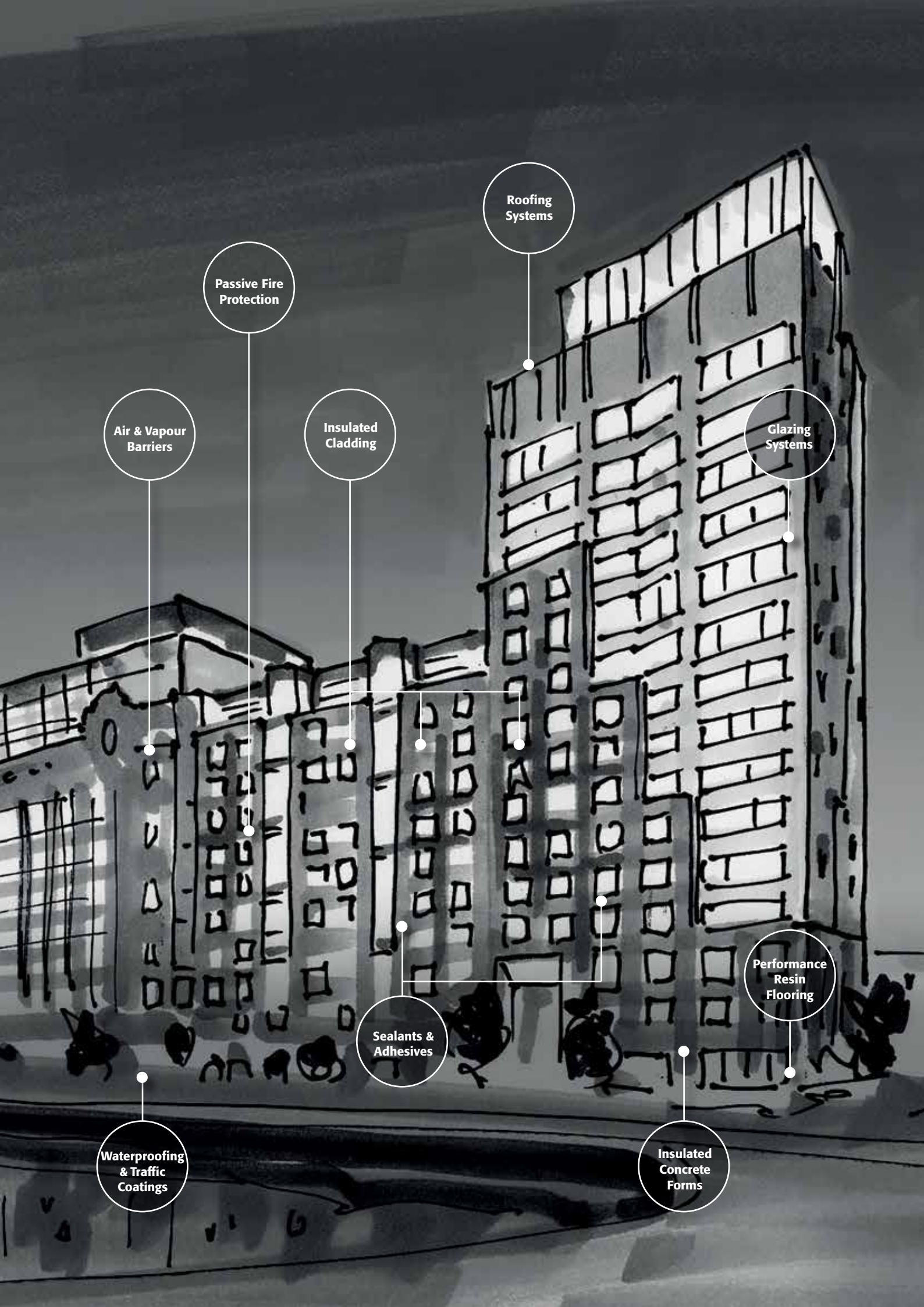




GLAZING SEALANTS & ASSOCIATED PRODUCTS

*Insulated Glass Unit Bonding / Weather Seal Sealants & Membranes /
Silicone Structural Bonding / Complimentary Mastics & Adhesives / Fire Protection*



Roofing
Systems

Passive Fire
Protection

Air & Vapour
Barriers

Insulated
Cladding

Glazing
Systems

Performance
Resin
Flooring

Sealants &
Adhesives

Waterproofing
& Traffic
Coatings

Insulated
Concrete
Forms

A world leading supplier of building envelope solutions across Asia Pacific

We know that the success of a construction project relies on more than the products that are used, as it takes a lot of skill, knowledge, understanding, and expertise to ensure that those products are applied in the best way possible.

At Tremco Construction Products Group (CPG), we're committed to shaping the future through innovative approaches and sustainable solutions.

This commitment is backed up by the fact that we bring together first-class technology with a customer-focused approach, along with skills that have been built up over multiple decades within very specialised fields across Asia Pacific, to provide a truly unique service.

From joint sealing, façade bonding and insulation through to passive fire protection, performance resin flooring, waterproofing, and roofing solutions — our broad range makes us the ideal partner to solve the complex challenges faced by today's architects, contractors, developers, and trades.

With expertise in a range of product technologies, Tremco CPG provides solutions to help you engineer structures that are more efficient to build and maintain, are virtually impervious to the elements, and can provide a multitude of finishes.

Our brands include Tremco, Dryvit, NewBrick, Nudura, Willseal, Flowcrete, Millbruck, Nullifire, Vandex, and Euclid Chemical.

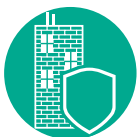


Why Tremco CPG?



Faster Construction Time

Lightweight, fast-curing and prefabricated products mean less occupant disruption, faster return to service, less revenue lost, and no call-backs.



Stronger and More Resilient

Our systems are designed for maximum durability, many with service lives far surpassing that of competing systems.



Cost Effective

A broad range of options that fit any budget — but also help you keep an eye on the future to ensure cost-effective ownership, operation and maintenance.



One Point of Contact

Products are tested for compatibility and backed by system warranties — all through a single point of contact, with a single point of responsibility.



Any Look You Want

A wide range of colours and finishes for floors, walls, façades and roofs to provide almost unlimited design potential for your building project.



Impervious to Weather

Products designed for maximum protection from the elements, including above and below ground-level solutions to prevent the ingress of water.



Better Insulated

Industry leading brands that provide solutions for more efficient building construction and operation, and exceeding strict energy codes for insulation.



Leading Edge Sustainability

Construction solutions that meet green building standards, enhancing building efficiency and conscious of the environment that surrounds us.

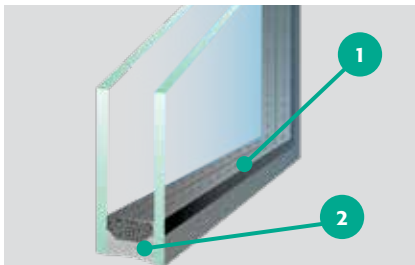
SINGLE SOURCE GLAZING SOLUTIONS

Since 1928, Tremco has pioneered superior weatherproofing solutions for the global construction market.

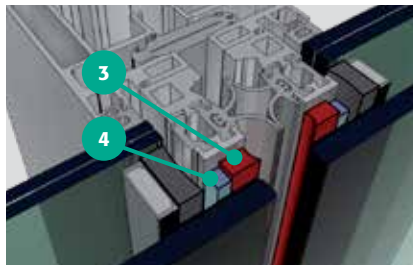
With a fully-integrated line of glazing sealants, compatible gaskets, tapes, spacers, setting blocks and window-to-wall interfaces, we eliminate the guesswork. This tested and fully integrated approach ensures the adhesion, weatherability and durability of the total glazing system for peace of mind.



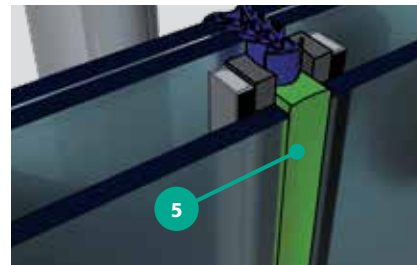
PRODUCT SELECTOR



1. Tremco JS680
2. Tremco JS562
Tremco JS442
Tremco JS443



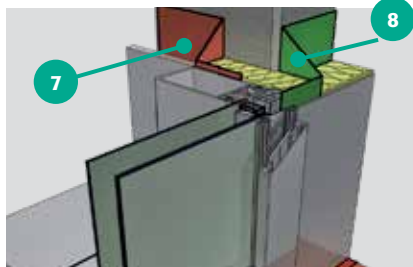
3. Tremco SG200 / Proglaze II
Tremco SG300
Spectrem 2 (2 sided only)
Proglaze SSG
4. Tremco SG635



5. Tremco SG555
Tremco SG558



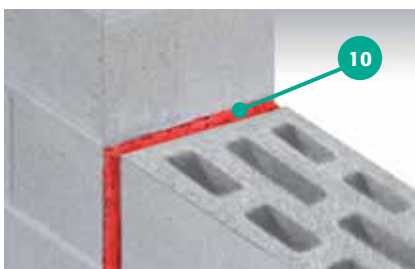
6. Tremco SG556
Tremco SG557
illbruck SP523



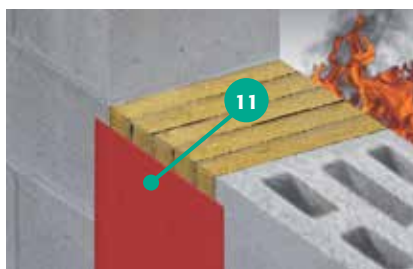
7. illbruck ME210
8. illbruck ME220



9. illbruck TP600



10. Nullifire FF197



11. Nullifire FS700



12. Nullifire FB750

Tremco CPG understands that the correct selection of structural sealants and glazing components is crucial for a safe and leak-free building.



With all of the variables in play on today's projects, it isn't about a good-better-best approach anymore, but about using the right approach to address the application.

There are specific sets of jobsite conditions where a sealant may be sufficient to make the connection. In other instances, extreme movement of the window or curtainwall may occur requiring high-movement connection. Tremco offers a variety of tested, proven transition solutions that can accommodate almost any design from standardised to highly specialised.

SILICONE STRUCTURAL & WEATHER SEAL SEALANTS



Silicone sealants for structural glazing applications and weather sealing curtainwalls, façades and joints.

Tremco takes the guesswork out of glazing system design and assures the adhesion, weatherability and durability of the system. Tremco also provides compatible perimeter caulking, weatherproofing and transitions from the window and/or curtain wall system to the wall assembly.



Tremco SG200 / Proglaze II

Two Component Silicone Sealant

A high performance, UV resistant, silicone sealant, designed especially for structural bonding of single panes or IG units to a structural frame in order to support the transfer of dynamic wind load. Meets ETAG002 requirements.



Tremco SG300

High Performance Silicone Sealant

A versatile, one part silicone sealant that is suitable for structural bonding applications. Tremco SG300 meets requirements such as ASTM C-920 Type S Grade NS Class 25.



Spectrem 2

One Component, Neutral Cure Sealant

A premium medium modulus neutral cure silicone sealant with $\pm 50\%$ movement capacity, suitable for a variety of heavy duty construction applications such as weather sealing, movement joint sealing and two-sided structural glazing.



Proglaze SSG

Single Component, Neutral Cure Silicone Sealant

Designed to meet the stringent performance needs for both 2- and 4-sided structural and protective glazing. Proglaze SSG offers fast through cure and exceptional tensile strength to meet the most stringent building codes.



Tremco SG555

Premium Grade Non-Staining Silicone Weather Seal

A one part sealant for projects where high joint movement is anticipated such as structurally glazed curtainwall or aluminium cladding. Can also be used for expansion joints and external perimeter joints with a movement accommodation of $\pm 50\%$.



Tremco SG556

General Purpose Silicone Weather Seal

A one part neutral curing medium modulus silicone sealant with excellent mechanical resistance, weathering capabilities and good adhesion to most porous/non-porous substrates with a movement accommodation of $\pm 30\%$.



Tremco SG557

Non-Staining Silicone Weather Seal

A single component silicone with good mechanical resistance and adhesion to most common porous and non-porous building substrates with a movement accommodation of $\pm 25\%$.



Tremco SG558

General Purpose Silicone Weather Seal

A one part, neutral cure silicone for use in applications where a high degree of movement is anticipated such as curtain walls, façades, perimeter joints and expansion joints. Having a movement accommodation of $\pm 50\%$.



BONDING FOR INSULATION GLASS UNITS



Sealants & glazing tapes developed to compliment the production of IG units and structural glazing systems.



Tremco JS680

Butyl Inner Sealant

A primary sealant for dual seal IG units that provides the main moisture vapour barrier and is fully compatible with Tremco secondary sealants. It has excellent adhesion to glass, aluminium, plastic and galvanised steel spacer bars.



Tremco JS442 / JS443

Polyurethane Sealant

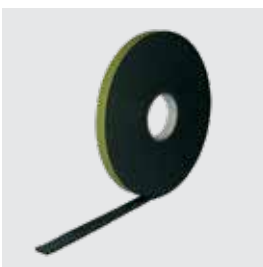
A high performance, two-component, mercury-free, polyurethane secondary sealant (Part B Liquid or Paste-High Viscosity). It is solvent free and highly thixotropic. It adheres to glass, aluminium and galvanised steel.



Tremco JS562

Two Component Silicone Sealant

A two part silicone developed as a secondary sealant for insulating glass (IG) unit manufacture in structural silicone glazing (SSG) applications and other critical areas requiring outstanding UV resistance.



Tremco SG635

Structural Glazing Tape

An open cell, high density PVC foam tape with a micro-cellular structure. Tremco SG635 has been specially developed to be used as a compatible spacer for structural glazing systems.

>> For more information, please visit www.tremcocpg-asiapacific.com



ILLBRUCK COMPLEMENTARY MASTICS & ADHESIVES



Certified solutions for sealing, bonding and weatherproofing window and façade systems.

Sustainable, high quality solutions from illbruck help to lower energy consumption and contribute to a healthy living environment. The products are regularly checked by independent materials testing institutes for performance, durability, safety and adherence to low emission standards.



illbruck SP030

Fix & Seal Crystal

SP030 is a transparent, fast curing adhesive-sealant based on illbruck's SP polymer formulation. SP030 cures rapidly to provide a flexible, crystal clear seal while minimising construction times.



illbruck SP050

Fix & Seal Universal

Provides a high strength flexible bond in a wide variety of construction and industrial applications. Typical uses include the bonding of skirting boards, battens, slats, door thresholds, acoustic panels (and similar sheet materials), etc.



illbruck SP350

Fix & Seal High Tack

A high strength hybrid construction adhesive with instant grab, making it ideal to bond most common construction materials such as metal, concrete, stone, tile, ceramic, timber and mirrors. It is also resistant to heat, fire and water.



illbruck SP523

Hybrid Facade Sealant

SP523 is recommended for construction sealing as joints in façades, rainscreens and curtain walls, perimeter joints around windows, doors and high movement joints.



illbruck PU700

Multi-Use Construction Adhesive/Panel Adhesive

PU700 is a rapid curing polyurethane foam adhesive which can be applied by gun or straw. It is an innovative high-strength solution for bonding a wide variety of applications serving as an alternative for mechanical fixings and mortars.



illbruck FM330

Pro Foam Air Seal

One part, rapid, moisture-curing expanding polyurethane foam which is gun applied and has excellent elasticity, air tightness and acoustic properties. It is airtight up to 1000pa and has 50% movement capability.



illbruck CT113

EPDM Membrane Adhesive

CT113 is a viscous liquid adhesive developed for the bonding of ME220 EPDM membranes, particularly in façade applications. CT113 is compatible with surfaces such as wood, metal, masonry and other building materials.



illbruck OT015

High Tack Membrane Adhesive

OT015 is used for bonding ME220 Elastomeric EPDM Membrane to itself & to typical construction substrates such as aluminium, metal, zinc plated metal, wood, PVC-U, and other non-porous materials.





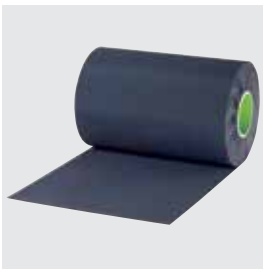
ILLBRUCK WEATHER SEALING SOLUTIONS



illbruck TP600

Compriband 600 / illmod 600

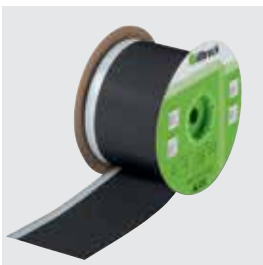
TP600 is a soft and flexible open cell polyurethane foam tape, impregnated with an acrylic based, UV stabilised resin. The resin is water repellent and contains a fire retardant.



illbruck ME220

EPDM Membrane

ME220 EPDM membrane is used for weather sealing the connecting joint between a window or a façade & an adjacent structure, or to provide an internal air-tight barrier in a similar detail.



illbruck ME210

Butyl Membrane

Low vapour permeable membrane for sealing building envelope connection joints on the interior face. It has low vapour transmission rate and high flexibility and mechanical damage resistance. Dilatation movement transfer up to 250%.



illbruck ME500

Intelligent, Flexible Window Perimeter Membrane

ME500-E is a breathable, flexible, polyethylene copolymer film comprising of non-woven fleece fabric, as well as acrylic self-adhesive and butyl adhesive strips for location to frame and wall.



illbruck ME501

Intelligent Window & Curtainwall Perimeter Membrane

A breathable, flexible, high strength, tear resistant membrane made from polyethylene copolymer film with non-woven fabric. It can be applied before or after window installation. Also available with gasket options for fixing to window profiles.

NULLIFIRE PASSIVE FIRE PROTECTION SOLUTIONS

Nullifire
Smart Protection

Passive fire protection for construction movement joints, gaps & service penetrations.

Passive fire protection is highly complex but crucially important, especially as buildings become more sophisticated. Nullifire provides innovative and pioneering technology that performs when called upon, giving customers confidence in their fire protection solutions.



Nullifire FF197

Gun Grade Fire Rated PU Foam

FF197 is a modified, single component, fire rated polyurethane foam used to seal linear gaps throughout the fire rated areas of a building. Perfect for sealing gaps found around fire rated doors & windows.



Nullifire FS700

Dynamic Acrylic Sealer

FS700 is a waterborne, single pack acrylic based sealer used to form linear gap seals and reinstate fire resistance performance where gaps are present in floor and wall constructions.



Nullifire FB750

Coated Batt

FB750 is a lightweight 4 hour fire barrier comprising of a mineral fibre board coated with an elastomeric ablative water based sealant.

It is important to understand the fire safety legislation required for your project. For expert advice, find your local office contact at www.tremcocpg-asiapacific.com





Tremco Construction Products Group (CPG) represents the combined power of brands including Dryvit, NewBrick, Nudura, Willseal, and Tremco, along with Tremco CPG affiliates Flowcrete, illbruck, Nullifire, Vandex and Euclid Chemical.

Our products and services empower teams to develop, design, restore and engineer structures that are more efficient to build and maintain, are virtually impervious to the elements and can provide any look desired.

www.tremcocpg-asiapacific.com

