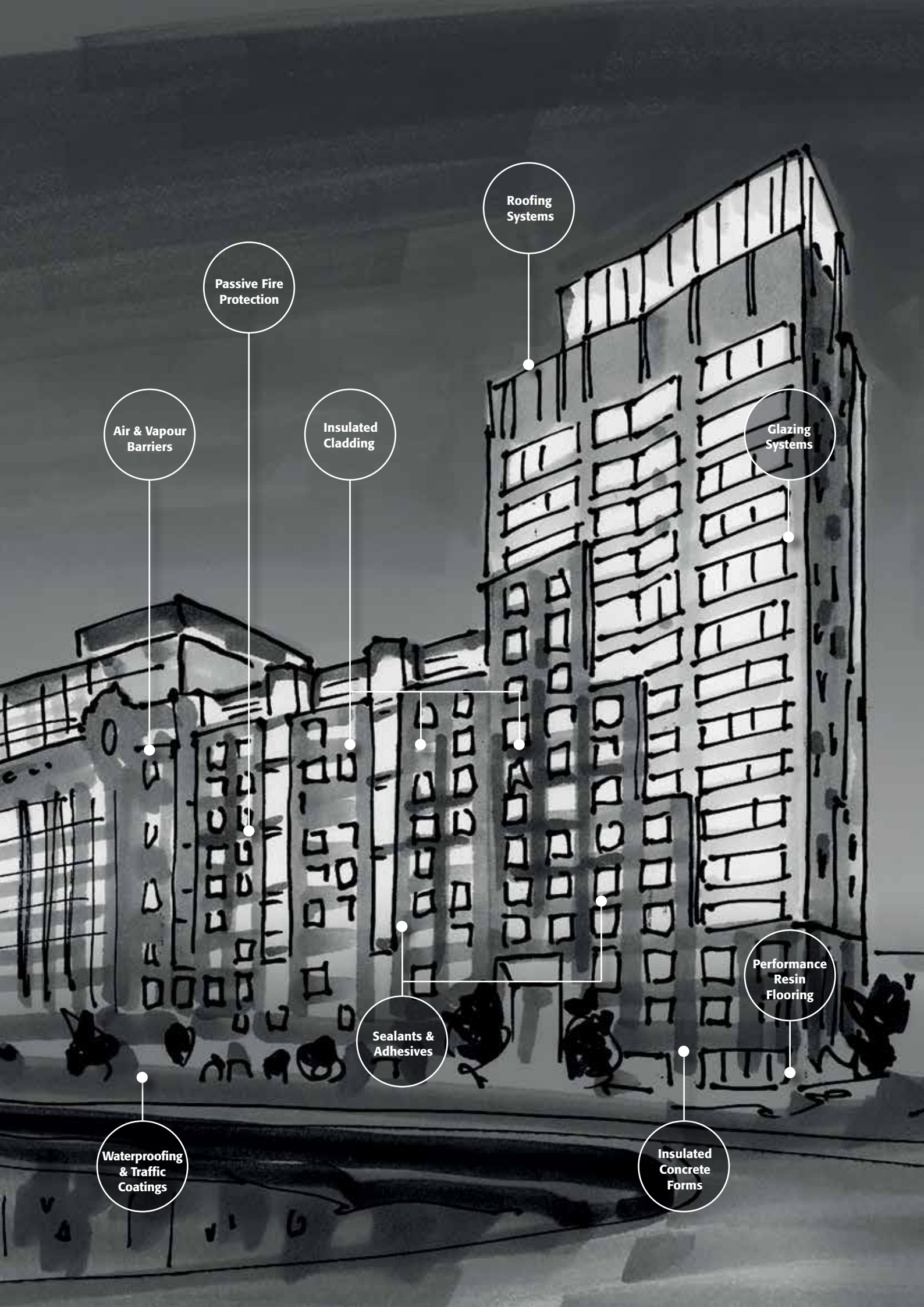




# COMPREHENSIVE WATERPROOFING SOLUTIONS

*Below Grade / Above Grade / Roof Systems  
Fluid Applied / Pre-Formed Membranes / Cementitious*





Roofing Systems

Passive Fire Protection

Air & Vapour Barriers

Insulated Cladding

Glazing Systems

Performance Resin Flooring

Sealants & Adhesives

Waterproofing & Traffic Coatings

Insulated Concrete Forms

# A world leading supplier of building envelope solutions across Asia Pacific

**We know that the success of a construction project relies on more than the products that are used, as it takes a lot of skill, knowledge, understanding, and expertise to ensure that those products are applied in the best way possible.**

At Tremco Construction Products Group (CPG), we're committed to shaping the future through innovative approaches and sustainable solutions.

This commitment is backed up by the fact that we bring together first-class technology with a customer-focused approach, along with skills that have been built up over multiple decades within very specialised fields across Asia Pacific, to provide a truly unique service.

From joint sealing, façade bonding and insulation through to passive fire protection, performance resin flooring, waterproofing, and roofing solutions – our broad range makes us the ideal partner to solve the complex challenges faced by today's architects, contractors, developers, and trades.

With expertise in a range of product technologies, Tremco CPG provides solutions to help you engineer structures that are more efficient to build and maintain, are virtually impervious to the elements, and can provide a multitude of finishes.

Our brands include Tremco, Dryvit, Nudura, Willseal, Flowcrete, illbruck, Nullifire, Vandex, Euclid Chemical, and USL brands.



## Why Tremco CPG?



### Faster Construction Time

Lightweight, fast-curing and prefabricated products mean less occupant disruption, faster return to service, less revenue lost, and no call-backs.



### Stronger and More Resilient

Our systems are designed for maximum durability, many with service lives far surpassing that of competing systems.



### Cost Effective

A broad range of options that fit any budget – but also help you keep an eye on the future to ensure cost-effective ownership, operation and maintenance.



### One Point of Contact

Products are tested for compatibility and backed by system warranties – all through a single point of contact, with a single point of responsibility.



### Any Look You Want

A wide range of colours and finishes for floors, walls, façades and roofs to provide almost unlimited design potential for your building project.



### Impervious to Weather

Products designed for maximum protection from the elements, including above and below ground-level solutions to prevent the ingress of water.



### Better Insulated

Industry leading brands that provide solutions for more efficient building construction and operation, and exceeding strict energy codes for insulation.



### Leading Edge Sustainability

Construction solutions that meet green building standards, enhancing building efficiency and conscious of the environment that surrounds us.

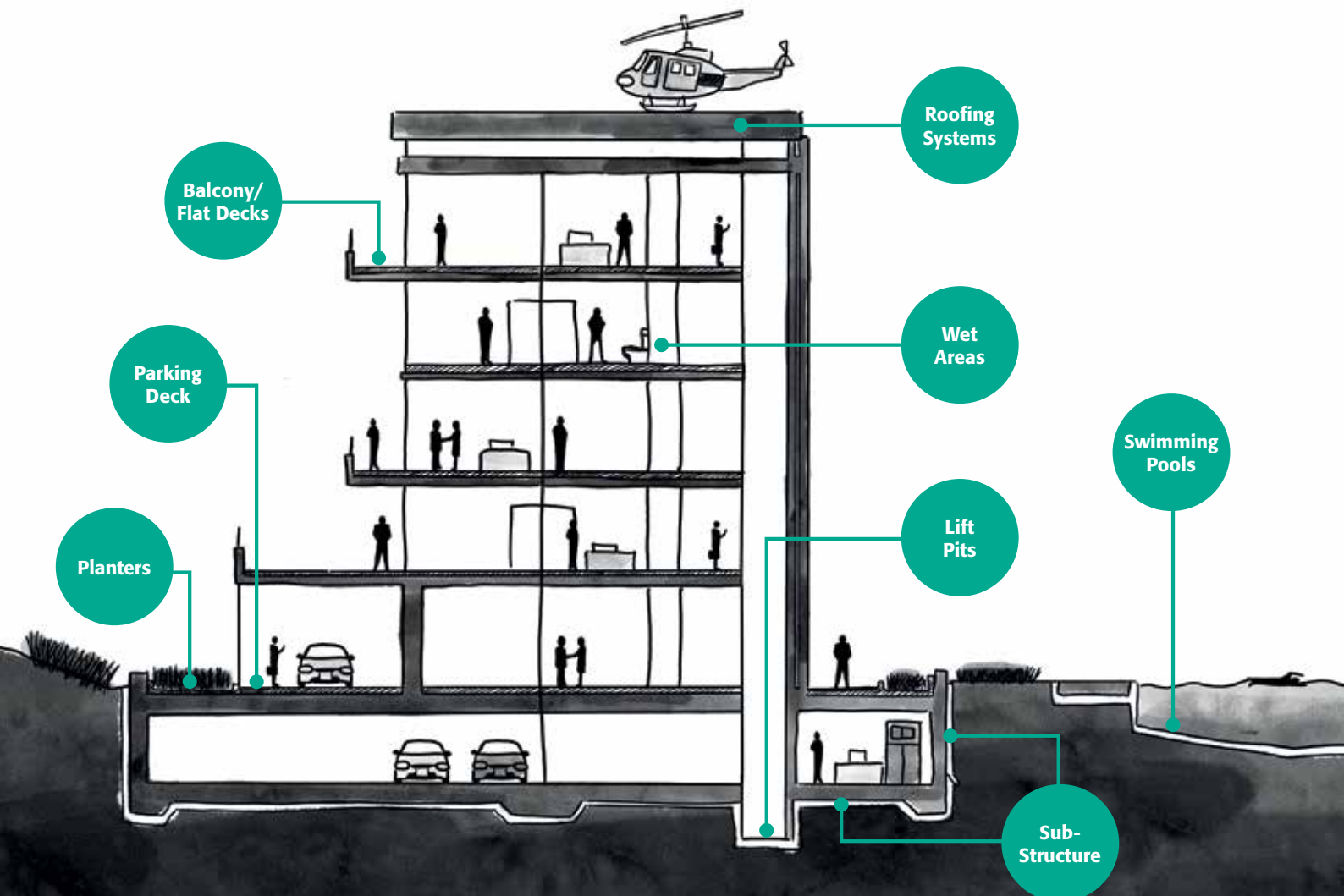
With so many areas and applications to consider, choosing a waterproofing solution can be difficult. Whether applying in basements and lift pits, or onto roof structures and everything in-between, ensuring the building's architecture is protected against the ingress of water is paramount in order to safe-guard the longevity of the structure.

At Tremco CPG, we understand that every project has its unique challenges, so we have developed an array of solutions to suit the varying requirements of waterproofing protection. Our team of specialists are on hand throughout the region to assist with project specifications and application training to ensure the correct solution is selected.



### Our waterproofing technologies include...

- Liquid Applied Systems
- Trafficable Membranes
- Hot & Cold Applied Sheet Membranes
- Cementitious Technology
- Drainage and Associated Products



# PRODUCT SELECTION GUIDE\*

	BELOW GRADE								ABOVE GRADE									
	Backfilled Wall (<20')	Backfilled Wall (>20')	Blindside/ Lagging Wall (<20')	Blindside/ Lagging Wall (>20')	Split Slab or Paver	Below Slab on Grade	Methane Barrier	Submerged Conditions	Green/ Damp Concrete	Planters	Landscape	Balcony	Flat Deck	Mechanical Room	Wet Areas	Swimming Pool	Roof	Vegetated Roof
<b>FLUID APPLIED (CONCEALED)</b>																		
TREMproof 201/60	●	●			●					●	●	●	●				●	●
TREMproof 250GC	●	●			●		●		●	●	●	●					●	●
TREMproof 260	●	●					●		●									
TREMproof 6100					●			●		●								●
<b>FLUID APPLIED (EXPOSED)</b>																		
Alphaguard BIO																		●
Alumination 301																		●
Vulkem 350NF/351										●	●	●	●					●
Vulkem 350NF/950NF														●				
Vulkem 350NF/951NF										●	●	●	●	●				●
Vulkem 352																		●
<b>SHEET MEMBRANE</b>																		
*TREMproof SA	●	●				●												●
TREMproof Amphibia			●	●		●		●	●									
*TREMproof FBM	●	●	●	●		●			●									
Paraseal LG	●	●	●	●														
<b>SHEET MEMBRANE (EXPOSED)</b>																		
TREMproof 3000/4000TA																		●
TREMproof 1400SRT																		●
TREMproof 4000M																		●
*TREMguard LLM (TPO)																		●
*TREMguard FBM (TPO)																		●
<b>CEMENTITIOUS MEMBRANE</b>																		
TREMproof FCW											●				●	●		
TREMproof M															●	●		
<b>DRAINAGE SYSTEMS</b>																		
TREMDrain 8/10G	●		●						●	●								●
TREMDrain 12/10G	●		●						●	●								●

This guide is used as a general reference.

Please consult your local Tremco CPG representative for regional recommendations based on your local building practices and warranty requirements.

\* Products are only available in the Southeast Asia market.

# FLUID APPLIED WATERPROOFING SYSTEMS



**Fluid-applied membranes are supplied in liquid form and applied by spray, roller or brush in above- and below-grade applications.**

Tremco CPG offers fluid-applied waterproofing systems that are often easier to install than alternative solutions as they can be spread very easily and can be applied into the hard-to-reach corners and crevices. The end result is a seamless, joint-free membrane that protects the integrity of the structure from the ingress of water moisture.

## CONCEALED SYSTEMS

### TREMproof 201/60

#### **High-Solids, VOC-Compliant, Modified PU Membrane**

This modified polyurethane waterproofing membrane is a one-part, moisture-curing elastomer available in three viscosities: self-leveling, roller and trowel (for detailing only). When time constraints are more relaxed, this waterproofing membrane is an economical choice.

Tremco Anti-Root Additive is available for use with TREMproof 201/60 as an optional feature to prohibit growing roots from affecting the overall performance of the waterproofing membrane. Applied primarily on concrete and masonry.

### TREMproof 250GC

#### **Rapid Curing, Fluid Applied, Elastomeric Waterproofing Membrane**

A rapid-curing, high solids, VOC compliant modified polyurethane waterproofing membrane that can be applied to damp and green concrete. It is a one-part moisture curing elastomer available in three viscosities: Self-Levelling (SL), Roller (R) and Trowel (trowel intended for detailing work only).



### TREMproof 6100

#### **Hot-Applied, Rubberised Asphalt Waterproofing Membrane**

A one-part, 100% solids, hot-applied, rubberised asphalt waterproofing membrane ideally suited for new and remedial applications. The TREMproof 6100 system is multi-layered, fabric-reinforced, and requires a double-jacketed, oil-bath melter with mechanical agitation for heating and application.

### TREMproof 260

#### **Polymer-Enhanced, Fluid-Applied, Asphalt Emulsion Membrane**

A single component, fully-adhered, below-grade waterproofing membrane that can be applied to damp or green concrete allowing application more quickly after the removal of formwork or following wet weather. It is available in both a spray and roller grade for most backfilled applications.



## EXPOSED SYSTEMS

### Vulkem 350NF/950NF

#### **Elastomeric, Trafficable Polyurethane Indoor Waterproofing System**

A low VOC, internal waterproofing system that is designed to have tenacious adhesion, extreme impact and abrasion resistance along with remarkable chemical stability. The elastomeric properties of the system's components enable the complete assembly to give and work with the concrete slab, bridging the shrinkage cracks.

### Alumanation 301

#### **Premium Metallic Coating for a Variety of Roofing Systems**

A metallic pigmented coating used for rustproofing and weatherproofing metal roofs and sidewalls, and as a reflective coating for BUR and modified bitumen roof systems. Alumanation 301 reflects heat, prevents corrosion, and protects against mild acid and alkali fumes on a variety of substrates, including metal, transite, built-up roofing, and modified bitumen.

### Vulkem 350NF/951NF

#### **Elastomeric, Trafficable Polyurethane Outdoor Waterproofing System**

A low VOC, UV resistant waterproofing system that is designed to have tenacious adhesion, extreme impact and abrasion resistance along with remarkable chemical stability. The elastomeric properties of the system's components enable the complete assembly to give and work with the concrete slab, bridging the shrinkage cracks.

### Vulkem 350NF/351

#### **Trafficable Polyurethane Waterproofing System with an Elastomeric Membrane**

A multi-layered waterproofing system comprising of a single component urethane membrane, and finished with a hard-wearing aliphatic, single component polyurethane finishing layer. Aggregates can be broadcast to create an anti-slip finish. Vulkem 350NF is a low VOC, low odour basecoat for 'neighbourhood friendly' applications.

### Vulkem 352

#### **Water-Based Acrylic Polymer Coating**

Vulkem 352 is a water borne coating based on acrylic latex polymers. It has excellent UV and weathering resistance and high elongation properties. Vulkem 352 is a cold-applied coating designed for waterproofing roofs, walls, vertical structures, and other areas needing a waterproof and UV resistant coating. It provides vapour-proofing, concealing unsightly hairline cracks, sound absorption and anti-carbonation.

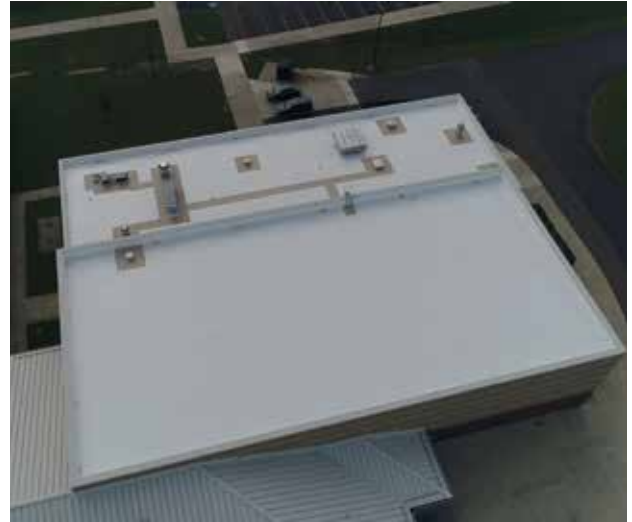
# ALPHAGUARD BIO

Easily applied, durable and technologically advanced system that extends the life of a variety of roof environments.

## Product Overview

**AlphaGuard BIO** is a virtually odourless, chemically cured, aromatic/aliphatic polyurethane roof restoration system distinguished by its high bio-based content. It is ideally suited for situations that demand high-performance roofs, but where odour is not allowed, such as school and hospital projects.

**AlphaGuard BIO** consists of a base coat and a top coat, both two-part, bio-based, polyurethane technology.



## Roof Restoration

The **AlphaGuard BIO** system can extend the life of an aging but still functional single-ply, modified bitumen or built-up roofing system dramatically and efficiently. It will reduce the cost of re-roofing while providing a new, chemically superior, fire-rated, fully warranted waterproofing system. Best of all, this solution may be eligible to receive additional top coats at the end of its service life, which can further extend the life of the original roofing system, maximising the end user's return on investment.

## Features & Benefits

- Economical
- Excellent flexibility, tensile strength, and elongation properties
- Very low odour
- Weathers extremely well
- Highly reflective
- Easy to maintain
- Full, long-term warranties
- Easy to repair







# SHEET MEMBRANE WATERPROOFING SYSTEMS



**Sheet waterproofing membranes provide impermeable barriers that prevent the passage of water from seeping into the building enclosure.**

Tremco CPG supplies a number of sheet waterproofing solutions for concealed and exposed environments, ensuring that buildings remain watertight from ground slab to rooftop. Sheet waterproofing systems are known to be strong, flexible, reliable, and can be applied using torch-on or self adhesive methods.

## CONCEALED SYSTEMS

### TREMproof FBM

#### **Pre-Applied, HDPE, Fully Bonded Membrane**

TREMproof FBM is a 1.2mm pre-applied, fully bonded HDPE waterproofing membrane. It consists of multi-layer composite waterproofing material for superior waterproofing performance, including a layer of high-density PE film, self-adhesive polymer layer and a unique particulate layer. Fully bonded waterproofing membrane for all below grade concrete structures.

### TREMproof SA

#### **HDPE Surfaced Bituminous Waterproofing Membrane**

TREMproof SA is a self-adhesive polymer modified bituminous, waterproofing sheet membrane laminated onto a tough HDPE film on one side and silicone release film on the other.

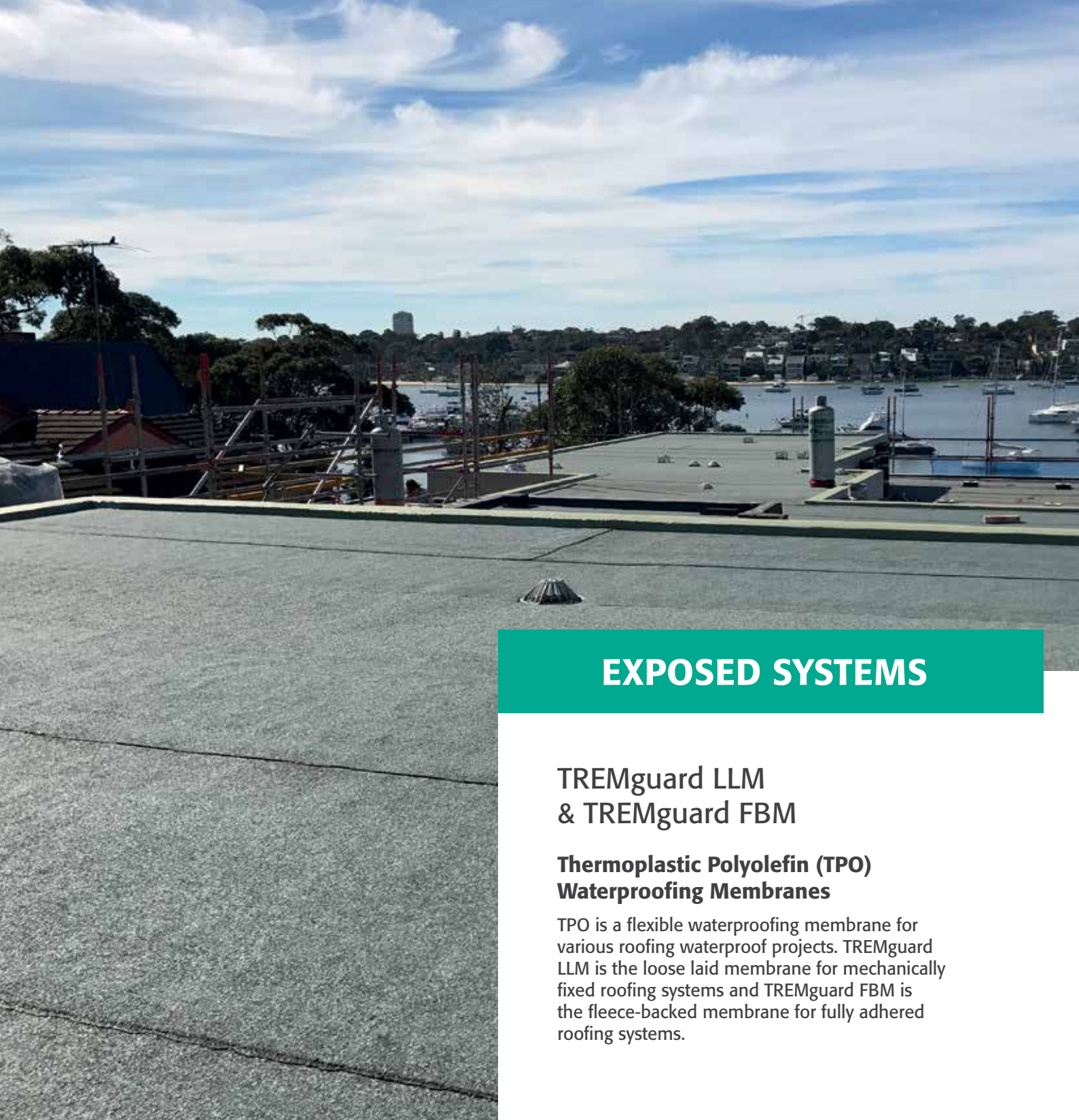
Designed for use as waterproofing or damp proofing membrane intended for concrete protection. It may be used for horizontal and vertical application for tanking below ground structure, subways and retaining walls.



### Paraseal LG

#### **HDPE/Bentonite Dual Waterproofing Sheet Membrane**

Paraseal LG is a sheet waterproofing and methane-mitigating waterproofing membrane consisting of 20 mils (0.5 mm) of HDPE, expandable, granular bentonite and a protective layer of spun-bonded polyester which creates a dual waterproofing membrane.



## EXPOSED SYSTEMS

### TREMguard LLM & TREMguard FBM

#### Thermoplastic Polyolefin (TPO) Waterproofing Membranes

TPO is a flexible waterproofing membrane for various roofing waterproof projects. TREMguard LLM is the loose laid membrane for mechanically fixed roofing systems and TREMguard FBM is the fleece-backed membrane for fully adhered roofing systems.

### TREMproof 3000/4000 TA & TREMproof 1400SRT

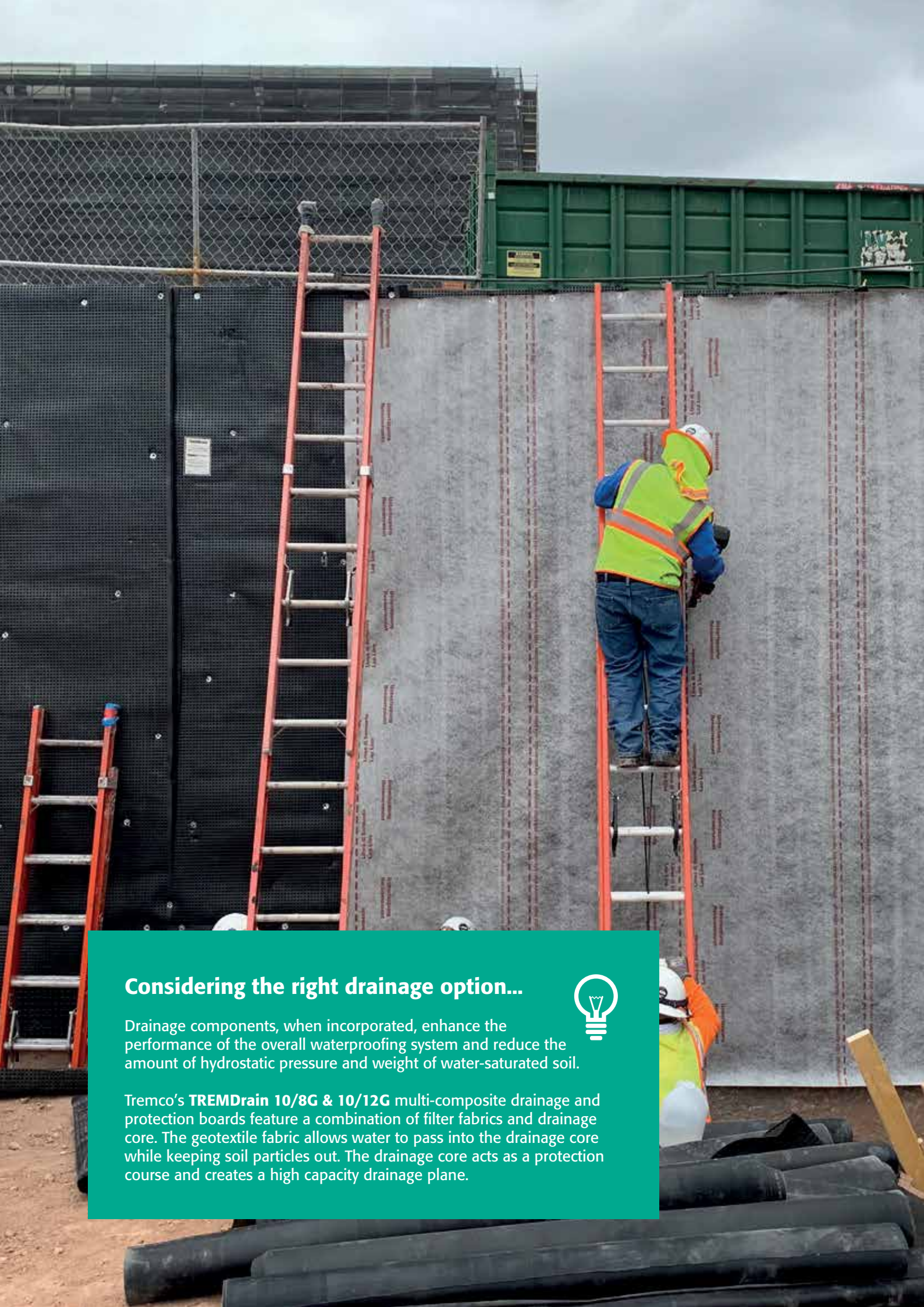
#### Torch-Applied Bituminous Waterproofing Membranes

Plastomeric waterproofing membranes, manufactured from mixture of bitumen and selected APP (Atactic Poly Propylene) polymers blended together to obtain excellent heat & UV resistance and waterproofing properties. Upper surface finish is available in PE film or fine sanded finish.

### TREMproof 4000M

#### Torch-Applied Membrane with Mineral Slate Chips

A 180g/m<sup>2</sup> high strength, non-woven polyester mat coated and impregnated with a tough APP modified bitumen compound. Surfaced with mineral slate chips which provide UV protection and protects against light pedestrian maintenance traffic.



## Considering the right drainage option...



Drainage components, when incorporated, enhance the performance of the overall waterproofing system and reduce the amount of hydrostatic pressure and weight of water-saturated soil.

Tremco's **TREMDrain 10/8G & 10/12G** multi-composite drainage and protection boards feature a combination of filter fabrics and drainage core. The geotextile fabric allows water to pass into the drainage core while keeping soil particles out. The drainage core acts as a protection course and creates a high capacity drainage plane.

# TREMPROOF AMPHIBIA

Self-healing, self-sealing and self-repairing sheet-applied waterproofing membrane for below-grade applications.

## Product Overview

**TREMProof Amphibia** waterproofing membrane is self-healing, self-sealing and self-repairing. It has three active layers - a watertight EPDM barrier, an active core with the ability to seal when penetrated and an active barrier which seals the overlap and helps resist lateral movement of water. Also, a non-woven fabric layer promotes the mechanical adhesion of the membrane to the concrete.

**TREMProof Amphibia** waterproofing membrane is designed for use over lagging on blindside walls, below-grade walls, pile caps, grade beams, under slab and buried forms such as elevator pits.

**TREMProof Amphibia Grip Tape** is a double-sided, synthetic rubber composite membrane tape that seals the seam overlaps during installation. This butyl tape bonds strongly to the **TREMProof Amphibia** membrane, while the fleece facing enhances the tape's ability to adhere to concrete.



## Features & Benefits

- Self-healing, self-sealing and self-repairing features reduce time required for detailing
- Highly resistant to hydraulic load and acceptable for use in hydrostatic conditions
- Active layer self-seals overlaps and helps resist water from spreading.
- Exceptional elongation and crack-bridging characteristics helps deliver extreme durability
- Resists aggressive natural ground agents and is usable in the presence of salt water



# CEMENT BASED WATERPROOFING SYSTEMS



**Cementitious waterproofing solutions that are easy to install for environments where structural movement is minimal, such as wet areas, bathrooms and water features.**

---

## TREMproof FCW

### **Flexible Cementitious Waterproofing Membrane**

A 2-component, flexible cementitious waterproofing membrane system. It consists of special polymer pre-blended resin and filler powder with graded fine quartz. TREMproof FCW is water based, non-toxic and non-hazardous.

## TREMproof M

### **Cementitious Waterproofing Slurry and Protective Coating**

A two part and polymer modified cementitious waterproofing slurry for waterproofing concrete and masonry. It comprises of a liquid polymer and a cement base incorporated with special additives which is easy to mix and apply.





## Connections: The Key to Long-Term Success

Tremco CPG provides comprehensive waterproofing solutions, including effective terminations and connectivity from below- to above-grade conditions. Waterproofing and gas mitigation protects the integrity of a structure and its occupants by forming a barrier that prevents water and gas from entering the building envelope and occupied space.

In order to eliminate potential sources of water and/or gas infiltration there must be continuity, without areas of weakness such as at transitions. Connections must be able to accommodate any normal movement of the building structure. Of critical importance is any incompatibility between the membrane and any connecting components which may result in membrane failure and ultimately lead to water infiltration.

For more information or guidance on selecting the right solution for your project, find your local Tremco Construction Products Group contact at [www.tremcocpg-asiapacific.com](http://www.tremcocpg-asiapacific.com)

**Tremco Construction Products Group (CPG) represents the combined power of brands including Dryvit, Nudura, Willseal, and Tremco, along with Tremco CPG affiliates Flowcrete, illbruck, Nullifire, Vandex, Euclid Chemical, and USL brands.**

Our products and services empower teams to develop, design, restore and engineer structures that are more efficient to build and maintain, are virtually impervious to the elements and can provide any look desired.

**[www.tremcocpg-asiapacific.com](http://www.tremcocpg-asiapacific.com)**

