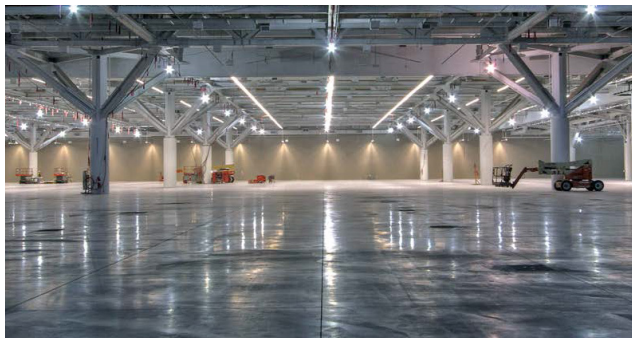




TUF-STRAND MACRO-SYNTHETIC FIBRES

FIBRE REINFORCED CONCRETE FLOOR TECHNOLOGY



APPLICATIONS

- Industrial Floors
- Commercial Floors
- Stadiums and Convention Centers
- Driveways and Sidewalks
- Highway and Road Pavements
- Topping Slabs

ENGINEERING SERVICES

- Available R&D Laboratories
- Specification Review
- On-site Consultation and Support
- UL Certified Fibre for Deck Construction
- Floor Software Design Assistance
 - ACI 360
 - ACI 544
 - TR34
 - fib Model Code

FEATURES & BENEFITS

TUF-STRAND SF is a patented, macro-synthetic fibre specifically engineered for use as a replacement to conventional reinforcing such as wire mesh and steel rebar for slabs on ground, precast concrete, composite steel decks and shotcrete applications. Engineered dosage rates are based on strength-to-strength calculations and supported by standardised test methods and industry practices. This non-corroding, three dimensional reinforcement will also provide abrasion, fatigue and impact resistance while increasing service life through improved toughness and durability.

Euclid Chemical is part of Tremco Construction Products Group (CPG), an amalgamation of industry leading building material brands.

- Patented fibre design
- Equivalent strength to steel
- Project time and cost savings
- Carbon Footprint reduction
- Engineered floor calculations
- Reduced cracking and maintenance

A partnership with Euclid Chemical and Tremco CPG means...

Concrete Mix Design Advice – Tremco CPG’s technical sales team is experienced in concrete mix design and how fibres work in combination with chemical admixtures, cement additives, air entrainment and other specialty products.

Specification and Business Development – Let our team of specification experts ensure that the right fibre offers the right performance for the application.

Fibre Training – One-on-one training and educational materials are available from Euclid Chemical with a full Technical and Marketing package suited towards owners, engineers, contractors and ready-mix producers ensuring a successful fibre project.

Engineered Fibre Calculations – Design aids and other tools are available to all Euclid customers to help them correctly determine and specify appropriate engineered dosage rates for each individual application ensuring project compliance.

Industry Association Involvement – Euclid Chemical is actively involved in promoting and advancing the state-of-the-art in FRC through participation in global trade associations such as ACI, NRMCA, FRCA, ASA, NPCA and ASTM.