



# EUACO PE FILLERBOARD

**CLOSED CELL POLYETHYLENE EXPANSION JOINT FILLERBOARD** **EUCLID CHEMICAL**

MISCELLANEOUS

EUACO PE FILLERBOARD

## DESCRIPTION

**EUACO PE FILLERBOARD** is a closed cell, crossed linked, non-absorbent polyethylene expansion joint fillerboard for use in expansion and isolation joints in concrete and masonry structures.

**EUACO PE FILLERBOARD** is UV resistant, has excellent weatherability, is non-absorbent, and has excellent properties allowing it to be used in water retaining and water excluding structures where, potable, salt, chlorine and sewerage water is prevalent.

## PRIMARY APPLICATIONS

- Slab on ground
- Brickwork and blockwork
- Reinforced concrete structure
- Concrete road and pavements
- Suspended slabs
- Basement and tunnels
- Water Retaining and water excluding structures
- Dam & reservoirs

## FEATURES

- Non-absorbent
- Light weight
- Excellent weatherability
- Resistant to ultraviolet light
- Suitable for submerged or trafficable joints
- Ability to compress and recover
- Non-extruding from joint movement
- No bitumen content

## TECHNICAL INFORMATION

|   |                              |  |
|---|------------------------------|--|
| <b>Density</b><br>ISO 845                             | <b>55.0 kg/m<sup>3</sup></b> | <b>Compressive Stress/Strain</b><br><b>Characteristic at 4 loading cycle, kPa,</b><br>ISO 3386-1 |
| <b>Tear Strength</b><br>ISO 8067                      | <b>1.51 N/mm<sup>2</sup></b> | 10% 25% 40% 50% 70%  |
| <b>Tensile Strength</b><br>ISO 1798                   | <b>0.31 N/mm<sup>2</sup></b> | <b>32.49 51.42 91.46 134.40 357.47</b>   |
| <b>Elongation at Break</b><br>ISO 1798                | <b>74.4%</b>                 | <b>Dimensional Stability at 100°C,%</b><br>ISO 2796  |
| <b>Compression set (50%, 22hrs, 23°C)</b><br>ISO 1586 | <b>17.76</b>                 | 20hrs 48hrs 7days 28days   |
|   |                              | Changes in width 1.32 1.58 1.69 1.78   |
|   |                              | Changes in length 3.31 3.34 3.74 4.46  |
|   |                              | Changes in thickness 1.47 1.90 2.20 2.49   |

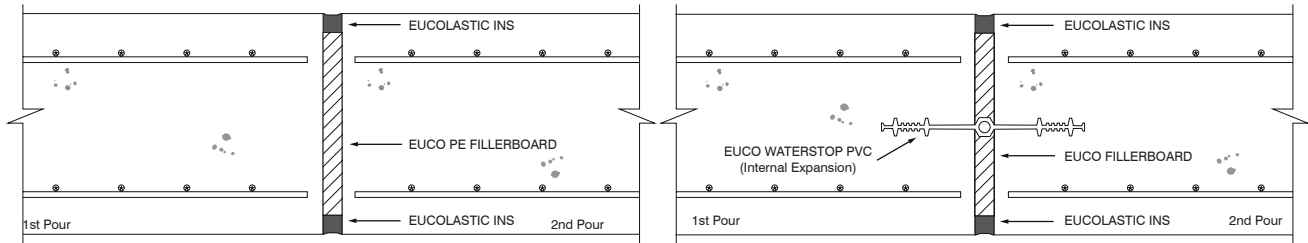
## PACKAGING

**EUACO PE FILLERBOARD** is available in standard sheet size of 2m X 1m and available thickness of 10mm, 12mm, 15mm, 20mm and 25mm. **EUACO PE FILLERBOARD** is available in standard low density of 50kg/m<sup>3</sup>.

## DIRECTIONS FOR USE

**EUCO PE FILLERBOARD** is cut to size in sheet form with a sharp retractable blade. Sheets and rolls are adhered to the first concrete structure by a contact adhesive. Adhesive is applied directly to the sheet in 50mm diameter “spots” @ 300mm centres (approximately) or as required.

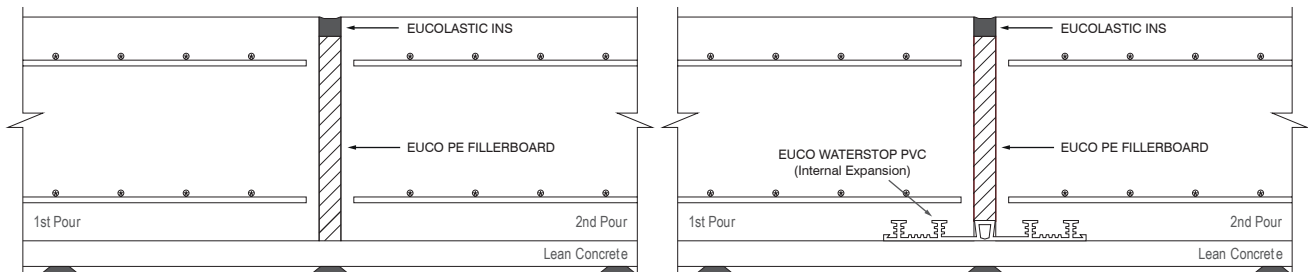
## TYPICAL APPLICATIONS



GENERAL PURPOSE

WATER RETAINING / EXCLUDING

### STANDARD DETAILS FOR WALL APPLICATIONS



GENERAL PURPOSE

WATER RETAINING / EXCLUDING

### STANDARD DETAILS FOR GROUND SLAB APPLICATIONS

Rev: 30/06/20